

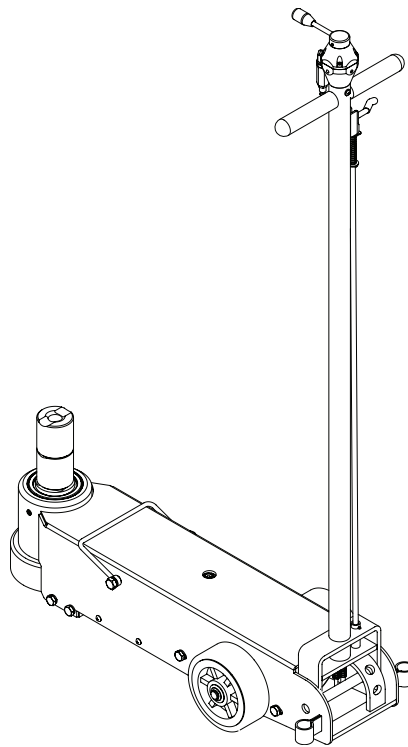
Operating Instructions & Parts Manual



Dual Stage Truck Jack

Model Number
23401

Capacity
*20/40 Ton



*1st stage capacity is 40 ton,
2nd stage capacity is 20 ton

U.S. Patent Nos. 5,341,723 -
5,946,912



This is the safety alert symbol. It is used to alert you to potential personal injury hazards. Obey all safety messages that follow this symbol to avoid possible injury or death.

⚠️ ADVERTENCIA

- Leer, comprender, y seguir las instrucciones antes de utilizar el aparato.
- El manual de instrucciones y la información de seguridad deben estar comunicados en lengua del operador antes del uso.
- No seguir estas indicaciones puede causar daños personales o materiales.

⚠️ WARNING

To avoid **crushing and related injuries**:



NEVER work on, under or around a load supported only by a hydraulic jack. **ALWAYS** use adequately rated jack stands.

SFA Companies

<http://www.omegalift.com>

Read this manual and follow all the Safety Rules and Operating Instructions before using this product.

SAFETY AND GENERAL INFORMATION

Save these instructions. For your safety, read, understand, and follow the information provided with and on this jack before using. The owner and operator of this equipment shall have an understanding of this jack and safe operating procedures before attempting to use. The owner and operator shall be aware that use and repair of this product may require special skills and knowledge. Instructions and safety information shall be conveyed in the operator's native language before use of this jack is authorized. If any doubt exists as to the safe and proper use of this jack, remove from service immediately.

Inspect before each use. Do not use if broken, bent, cracked or damaged parts are noted. Any jack that appears damaged in any way, or operates abnormally shall be removed from service immediately. If the jack has been or suspected to have been subjected to a shock load (a load dropped suddenly, unexpectedly upon it), immediately discontinue use until jack has been checked by a factory authorized service center (contact distributor or manufacturer for list of authorized service centers). It is recommended that an annual inspection be done by qualified personnel. Labels and Operator's Manuals are available from manufacturer.

PRODUCT DESCRIPTION

The Omega dual stage Truck Jack is designed to lift, but not support, rated capacity partial vehicle loads consisting of one end of a vehicle. **Immediately** after lifting, loads must be supported by a pair of appropriately rated jack stands. Ensure that your air source can dedicate 7.8 CFM @ 110 - 175 psi to each jack operated.



NEVER use a hydraulic truck jack as a stand-alone device. After lifting, **immediately** support the lifted vehicle with a pair of appropriately rated jack stands.

PREPARATION

Assembly (refer to Replacement Parts page 3 and 8 - 9 for parts location & assembly sequence)

1. Remove one of two c-clips securing the handle fork axle.
2. Remove handle fork axle from jack frame, then insert and align the handle fork's holes with the corresponding handle fork axle holes in the frame.
3. Re-insert the handle fork axle, which now acts as the pivot axle for the handle fork and integral handle.
4. Secure the handle in place by installing the c-clip removed earlier.
5. With handle securely in place, use the handle position lock to secure the handle in it's upright, vertical position.
6. Ensure the oil filler screw is tight, then lean the jack over to one side to allow access to the air lines found at the base of the handle and corresponding connections found on the power unit.
7. Position the handle routed hoses around of the handle fork axle.
8. Insert the 1/4" (smallest) air line into the corresponding 1/4" connection from the power unit. Press connections together by hand.

NOTE: Handle routed hoses should insert approx. 3/8" into jack routed hose connection. The hose connections are friction type couplers which require no tools. **DO NOT USE TOOL TO INSERT HOSES**, as damage to hose or coupler will occur. Take care not to bend hoses at 90 deg. angles. Instead, gently loop the hoses into position.

9. Insert the .30" (largest) air line into the corresponding coupler on power unit reservoir.

Before Use

1. Verify that the product and application are compatible, if in doubt call Omega Technical Service (888) 332-6419.
2. Before using this product, read the operator's manual completely and familiarize yourself thoroughly with the product, its components and recognize the hazards associated with its use.
3. To familiarize yourself with basic operation, locate and turn the lift control valve (Air control level):
 - a. Clockwise is "lower" position to lower the load.
 - b. Counter-clockwise: is "lift" position to raise the load.
4. Pour a teaspoon of good quality air tool lubricant into the air supply inlet of the lift control valve. Connect to air supply, then turn to lift position for 3 seconds to evenly distribute lubricant.

NOTE: These models are equipped with a typical 1/4" NPT air coupler. When installing a different air coupler of your choice, ensure that thread tape or compound is used when servicing connections. To ensure dependable, trouble free operation an inline air dryer and oiler is recommended.

6. Ensure that jack rolls freely. Raise and lower the unloaded ram throughout the lifting range before putting into service to ensure the jack operates smoothly. Replace worn or damaged parts and assemblies with Omega authorized replacement parts only.

Bleeding / Venting Trapped Air

With ram fully retracted, locate and push air release button. This will help release any pressurized air which may be trapped within the reservoir. Ensure the oil level is just below the oil filler screw hole and reinstall the oil filler screw.

SPECIFICATIONS

Model	Capacity	Jack Size (L x W)	Saddle Min. Height	Saddle Max. Height
23401	20/40 Ton	33-7/8" x 12-3/8"	7-1/2" (w/o adapter) 10-1/4" (w/1st adapter) 13" (w/1st & 2nd adapters)	13" (w/o adapter) 17-3/4" (w/1st adapter) 20-1/2" (w/1st & 2nd adapters)

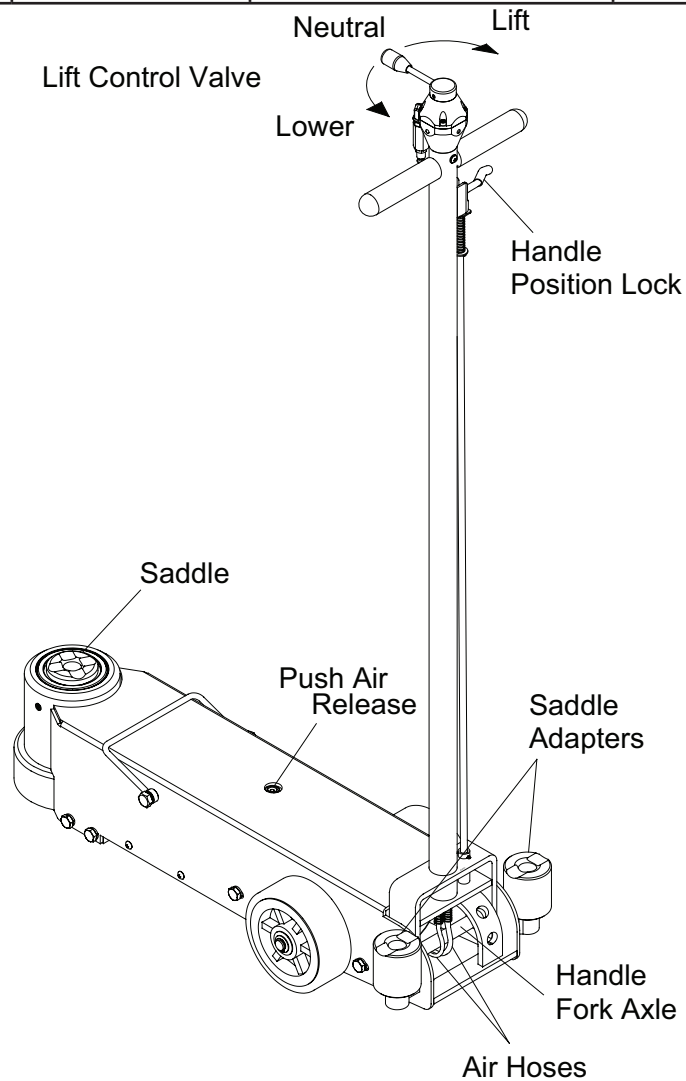
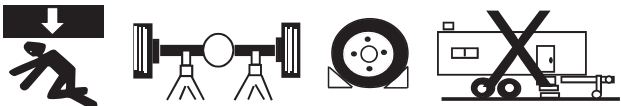


Figure 1- Model 23401 Nomenclature

⚠ WARNING

- **Study, understand, and follow** all printed materials provided with/on this product before use.
- **Do not** exceed rated capacity.
- **This is a lifting device only!**
- **Immediately** after lifting, support the load with a **pair** of appropriately rated jack stands.
- Use **only** on hard, level surface.
- **Lift only** on areas of the vehicle as specified by the vehicle manufacturer.
- **Never** wire, clamp or otherwise disable the lift control valve to function by other than operator's hand.
- No alterations shall be made to this product.
- **Failure** to heed these markings may **result in personal injury and/or property damage.**

⚠ WARNING



To avoid **crushing and related injuries**:

- **Never** work on, under or around a load supported only by hydraulic jack.
- **Always** use adequately rated jack stands.
- Chock each unlifted tire in both directions.
- **Do not** use this device to lift, level, lower, support nor move a house, mobile home, travel trailer, camper or any building structure.
- **Be alert and sober** when using this product. Do not operate under the influence of drugs or alcohol.

⚠ *The wheels provided with this jack are for positioning the jack under a load **ONLY!** The wheels are **not** load wheels. Do not try to dolly or move the vehicle with the jack!*

OPERATION (see Fig 1)

Lifting

Note: The jack is equipped with handle position lock. To adjust the handle, release lock device by pulling the lever up, lever is spring loaded and will lock into desired position. Ensure lever locking mechanism is fully engaged before leaving

1. Connect adequate air source to the air supply inlet.
2. Follow the vehicle manufacturer's recommended guidelines for lifting. Engage the emergency brake and chock each unlifted wheel in both directions to prevent inadvertent vehicle movement.
3. Center jack saddle under lift point, then rotate air control lever to lift position until saddle contacts the lift point. To lift, continue the lift control lever until load reaches desired height. Simply move control lever to neutral position to end lift event.
4. Transfer the load **immediately** to appropriately rated jack stands.

⚠ *Only attachments and/or adapters supplied by the manufacturer shall be used. Lift only on area of the vehicle as specified by the vehicle manufacturer.*

⚠ ***NEVER** use hydraulic jack as a stand alone device! **ALWAYS** transfer the lifted load **IMMEDIATELY** to a pair of appropriately rated jack stands. Use one pair of jack stands per vehicle. Rated capacity is per pair only! Do not exceed rated capacity.*

Lowering

⚠ *Be sure all tools and personnel are clear before lowering load. **Slowly turn the control lever!** The load lowers at a control descent.*

1. Raise load high enough to clear the jack stands.
2. Remove jack stands carefully (**always** used in pairs).
3. Turn the control lever to lower position. If the load fails to lower:
 - a. Use another jack to raise the vehicle high enough to reinstall jack stands.
 - b. Remove the malfunctioning jack and then the jack stands.
 - c. Use the functioning jack to lower the vehicle.
4. After removing jack from under the vehicle, fully retract the jack to reduce ram exposure to rust and contamination.

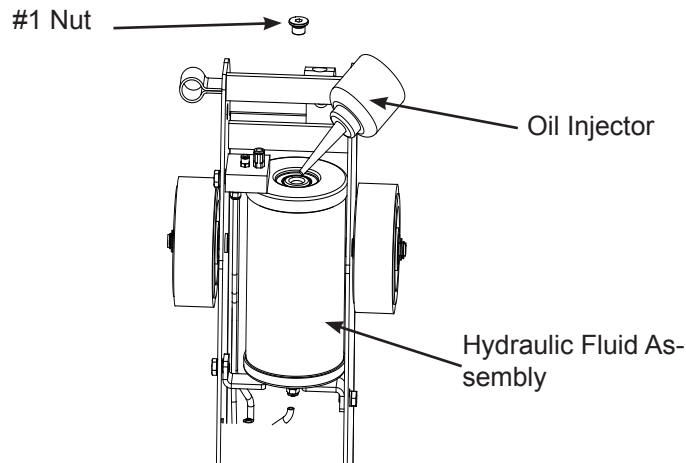
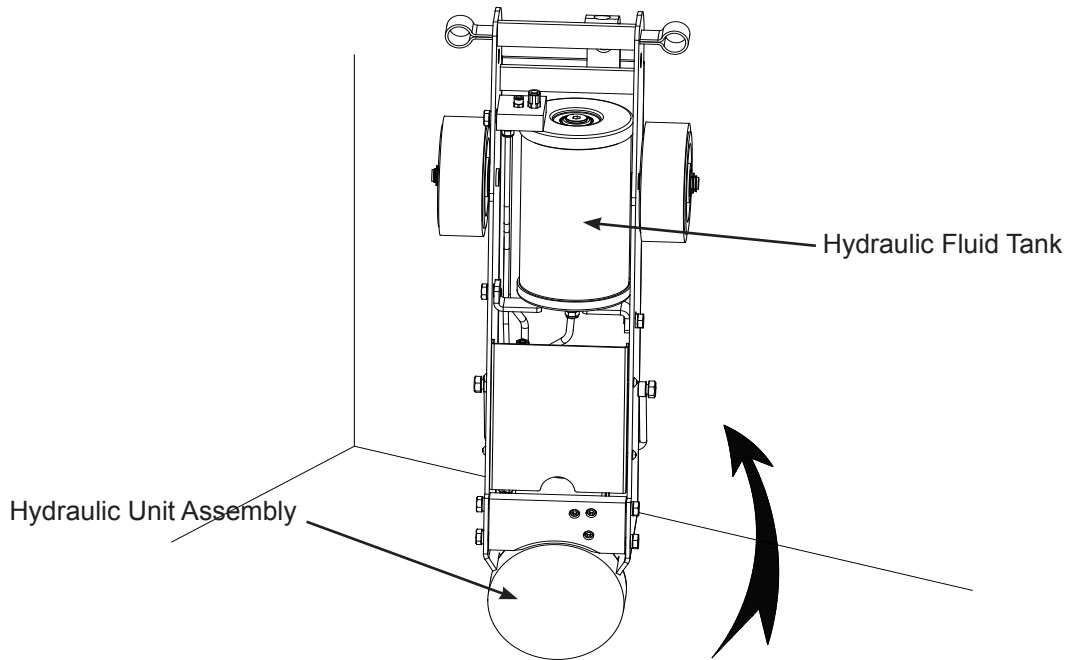
MAINTENANCE

Important: Use only good grade hydraulic jack oil. Avoid mixing different types of fluid and NEVER use brake fluid, turbine oil, transmission fluid, motor oil or glycerin. Improper fluid can cause premature failure of the jack and the potential for sudden and immediate loss of load. We recommend Mobil DTE 13M or equivalent.

Adding/ Changing Oil

For best performance and longest life, replace the complete fluid supply at least once per year.

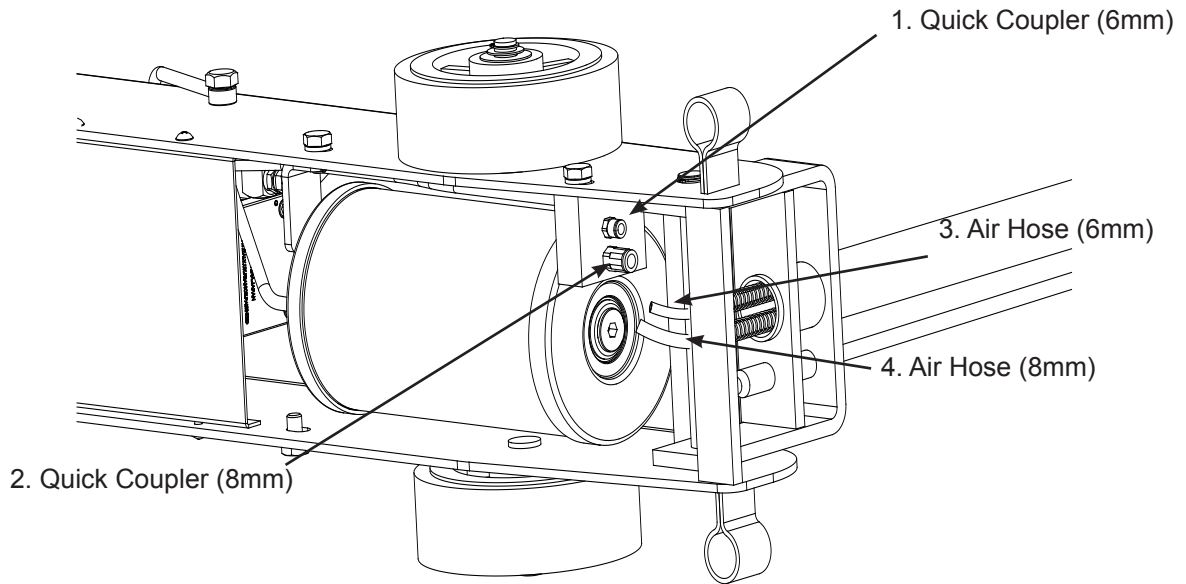
1. Remove handle assembly. (Refer to page 6)
2. Position the jack up-right as illustrated. (Keep hydraulic unit assembly down and the fluid reservoir up, to gather the air on top)
3. Remove #1 with a hex key wrench
4. Fill up with hydraulic fluid in the tank. The O.K. Mobile DTE 13 or equivalent Hydraulic Fluid is recommended.
5. Reverse the disassembling procedure to assemble.



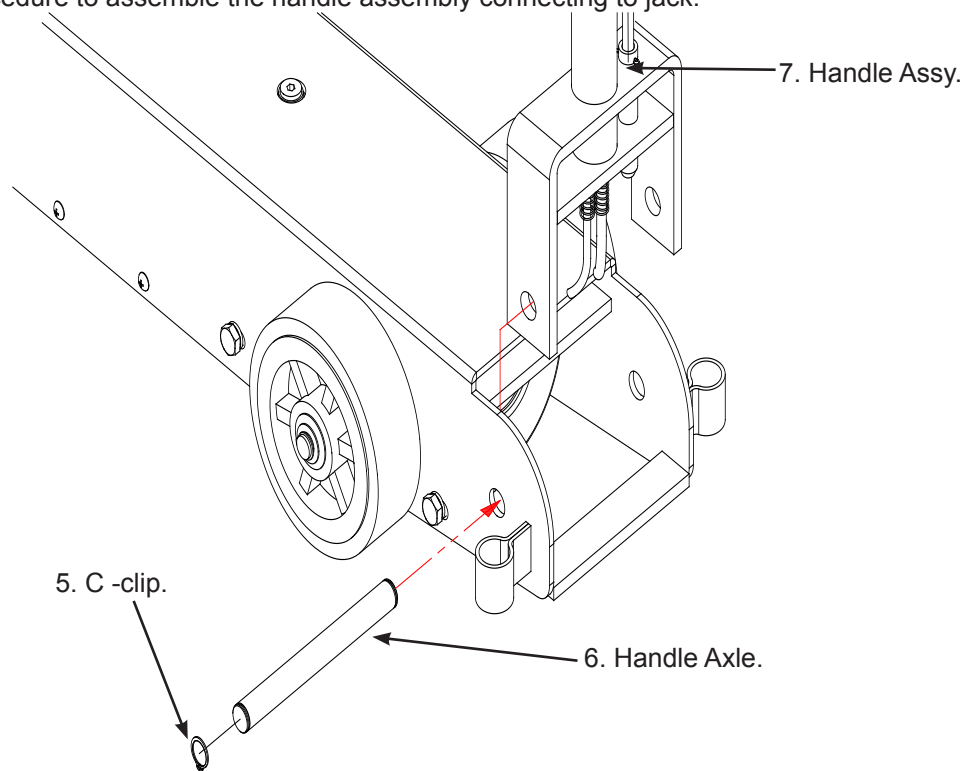
Removal of Handle Assembly

In proceeding the disassembly, always refer to the parts exploded drawing and following sectional drawings.

1. Turn jack around on its side.
2. Remove #3 air hose (6mm) from #1 quick coupler (6mm)
3. Remove #4 air hose (8mm) from #2 quick coupler (8mm)



4. Turn jack back to its position
5. Remove #5 "C"- clip with a C-clip plier.
6. Remove #6 handle axle.
7. Remove #7 handle assembly.
8. Reverse the procedure to assemble the handle assembly connecting to jack.



Lubrication

A periodic coating of light lubricating oil to pivot points, axles and hinges will help to prevent rust and assure that wheels move freely and the pump functions smoothly. To help ensure trouble free operation, an inline air dryer and oiler is recommended.

Cleaning

Periodically check the ram for signs of rust or corrosion. Clean as needed and wipe with an oily cloth.

Note: Never use sandpaper or abrasive material on ram surfaces!

Storage

When not in use, store the jack with saddle fully lowered.

REPLACEMENT PARTS

(see pages 6 thru 7)

Not all components of the jack are replacement items, but are illustrated as a convenient reference of location and position in the assembly sequence. When ordering parts, please give the Model number, part number and parts description. Call or write for current pricing: SFA Companies 10939 N. Pomona Ave. Kansas City, MO 64153, U.S.A. E-Mail: sales@omegalift.com Tel: (888) 332-6419 Fax: (816) 891-6599 Omega Website: <http://www.omegalift.com>

TROUBLESHOOTING

Symptom	Possible Causes	Corrective Action
Jack will not lift load	<ul style="list-style-type: none"> • Load is too heavy • Air supply inadequate 	<ul style="list-style-type: none"> • Consider higher capacity jack • Ensure adequate air supply
Jack will lift, but not maintain pressure	<ul style="list-style-type: none"> • Hydraulic unit malfunction 	<ul style="list-style-type: none"> • Discontinue use, contact Omega technical service
Jack will not lower after unloading	<ul style="list-style-type: none"> • Reservoir overfilled 	<ul style="list-style-type: none"> • Drain fluid to proper level • Clean and lubricate moving parts
Poor lift performance	<ul style="list-style-type: none"> • Fluid level low • Air trapped in system 	<ul style="list-style-type: none"> • Ensure proper fluid level • With ram fully retracted, push air release button to let pressurized air escape.
Will not lift to full extension	<ul style="list-style-type: none"> • Fluid level low 	<ul style="list-style-type: none"> • Ensure proper fluid level

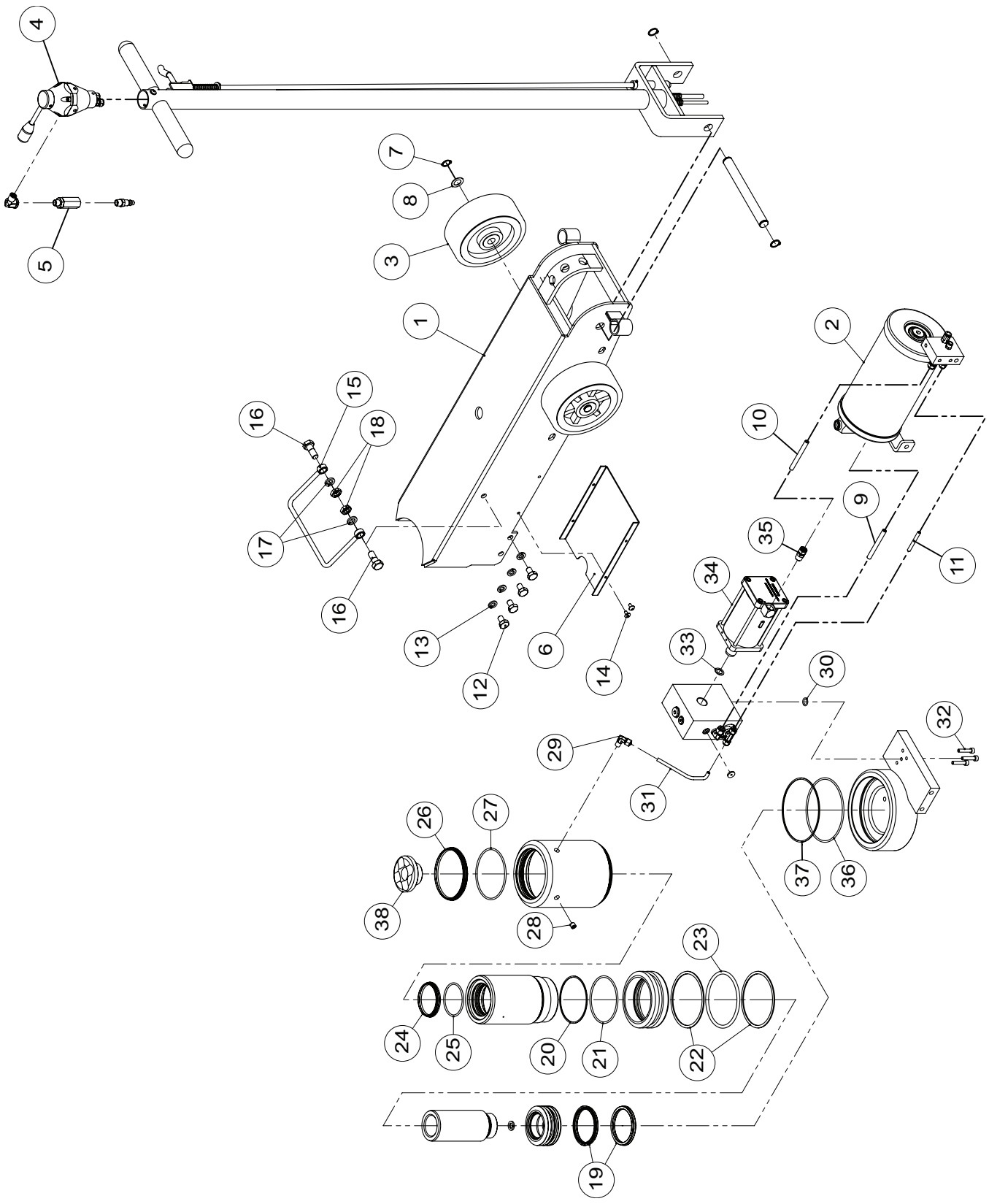


Figure 2 - Replacement Parts Illustration for Model 23401

Omega 23401 Axle Jack Parts List

Item	Part No.	Description	Qty
1	A35-4-3001-101	Frame Assembly	1
2	A35-4-1300-202	Oil Tank	1
3	A35-6-5100-105	Wheel	2
4	A35-4-8000-104	Air Inlet Valve Assy	1
5	A07-4-2900-100	Filter Assembly	1
6	A35-6-6003-102	Base Plate	1
7	667-5-0150-023	Retaining Ring	2
8	511-3-0150-108	Washer	2
9	A35-6-0005-285	Life Air Hose	1
10	A35-6-0005-207	Oil Hose	1
11	A35-6-0008-620	Return Air Hose	1
12	653-1-0100-014	Screw	7

Item	Part No.	Description	Qty
13	605-3-0100-203	Washer	7
14	609-1-0050-10911	Screw	4
15	A35-3-1806-107	Carry Handle	1
16	653-1-0120-056	Bolt	2
17	605-3-0120-007	Washer	2
18	651-2-0120-104	Nut	2
28	641-1-0098-103	Bolt	3
29	653-7-0004-101	Brass Connector	1
32	649-1-0060-030	Bolt	3
34	G55-3-2000-108	Air Pump Assembly	1
35	651-1-0008-105	Brass Connector	1
38	A35-6-1101-309	Saddle	
	A35-3-9904-107	Repair Kit	

Axle Jack Repair Kit Items

Item	Description	Qty
19	U-cup	2
20	Back-up Ring	1
21	O-ring	1
22	Back-up Ring	2
23	O-ring	1
24	Dust Wiper	1
25	O-ring	1

Item	Description	Qty
26	Dust Wiper	1
27	O-ring	1
30	O-ring	1
31	Return Air Hose	1
33	Brass Washer	1
36	Back-up Ring	1
37	Back-up Ring	1

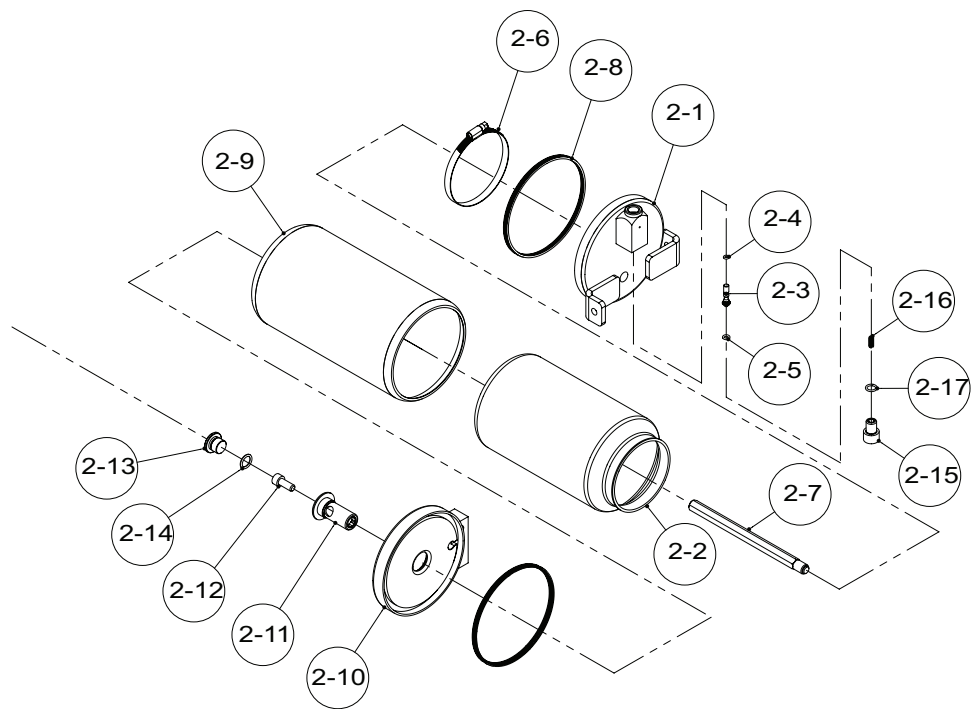


Figure 3 - Replacement Parts Illustration for Model 23401 Oil Tank

Omega 23401 Oil Tank Parts List

Item	Description	Qty
2-1	Oil Tank Cover (I)	1
2-2	Oil Reservoir	1
2-3	Release Piston	1
2-4	O-ring	1
2-5	O-ring	1
2-6	Hose Clip	1
2-7	Bolt	1
2-8	Oil Seal	2
2-9	Oil Tank	1
2-10	Oil Tank Cover (II)	1
2-11	Bolt	1
2-12	Bolt	1
2-13	Bolt	1
2-14	O-ring	1
2-15	Bolt	1
2-16	Spring	1
2-17	O-ring	1
	Repair Kit (P/N A35-3-9905-109)	

Omega 23401 Oil Tank Repair Kit

Item	Description	Qty
2-2	Oil Reservoir	1
2-4	O-ring	1
2-5	O-ring	1
2-8	Oil Seal	2
2-14	O-ring	1
2-17	O-ring	1

ONE YEAR LIMITED WARRANTY

For a period of one (1) year from date of purchase, SFA Companies will repair or replace, at its option, without charge, any of its products which fails due to a defect in material or workmanship under normal usage. This limited warranty is a consumer's exclusive remedy.

Performance of any obligation under this warranty may be obtained by returning the warranted product, freight prepaid, to SFA Companies Warranty Service Department, 10939 N. Pomona Ave., Kansas City, MO 64153.

Except where such limitations and exclusions are specifically prohibited by applicable law, (1) THE CONSUMER'S SOLE AND EXCLUSIVE REMEDY SHALL BE THE REPAIR OR REPLACEMENT OF DEFECTIVE PRODUCTS AS DESCRIBED ABOVE. (2) SFA Companies SHALL NOT BE LIABLE FOR ANY CONSEQUENTIAL OR INCIDENTAL DAMAGE OR LOSS WHATSOEVER. (3) ANY IMPLIED WARRANTIES, INCLUDING WITHOUT LIMITATION THE IMPLIED WARRANTIES OF MERCHANTABILITY AND FITNESS FOR A PARTICULAR PURPOSE, SHALL BE LIMITED TO ONE YEAR, OTHERWISE THE REPAIR, REPLACEMENT OR REFUND AS PROVIDED UNDER THIS EXPRESS LIMITED WARRANTY IS THE EXCLUSIVE REMEDY OF THE CONSUMER, AND IS PROVIDED IN LIEU OF ALL OTHER WARRANTIES, EXPRESS OR IMPLIED. (4) ANY MODIFICATION, ALTERATION, ABUSE, UNAUTHORIZED SERVICE OR ORNAMENTAL DESIGN VOIDS THIS WARRANTY AND IS NOT COVERED BY THIS WARRANTY.

Some states do not allow limitations on how long an implied warranty lasts, so the above limitation may not apply to you. Some states do not allow the exclusion or limitation of incidental or consequential damages, so the above limitation or exclusion may not apply to you. This warranty gives you specific legal rights, and you may also have other rights, which vary from state to state.



Shinn Fu Company of America, Inc.
10939 N. Pomona Ave. Kansas City, MO 64153, U.S.A.

Tel:1-888-332-6419 Fax:1-816-891-6599 E-Mail:sales@omegalift.com Omega Website: <http://www.omegalift.com>

