

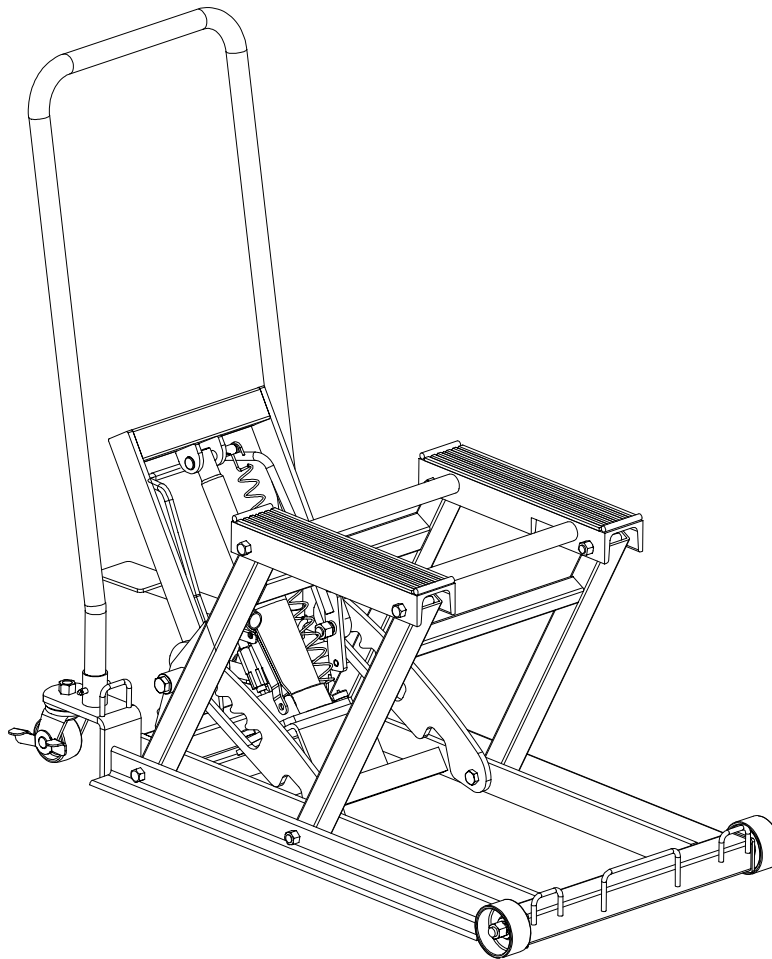


Operating Instructions & Parts Manual

Motorcycle/ATV Lift

**Model Number
49154**

**Capacity
1500 Lbs**



**SFA Companies © 2002
10939 N. Pomona Avenue
Kansas City, MO 64153**

OIPM#49154-ATV2
Printed in China

Save these instructions. For your safety, read, understand, and follow the information provided with and on this Lift. The owner and operator of this equipment shall have an understanding of this Lift and safe operating procedures before attempting to use. The owner and operator shall be aware that use and repair of this product may require special skills and knowledge. Instructions and safety information shall be conveyed in the operator's native language before use of this Lift is authorized. If any doubt exists as to the safe and proper use of this Lift, remove from service immediately. **Inspect before each use.** Do not use if broken, bent, cracked or damaged parts are noted. Any Lift that appears damaged in any way, or operates abnormally shall be removed from service immediately. If the Lift has been or suspected to have been subjected to a shock load (a load dropped suddenly, unexpectedly upon it), immediately discontinue use until it has been checked by an Omega authorized service center. It is recommended that an annual inspection be done by qualified personnel. Labels and Operator's Manuals are available from manufacturer (see Replacement Parts, page 5).

PRODUCT DESCRIPTION

Omega Motorcycle/ATV Lift is specifically designed to lift and support up to rated capacity loads consisting of a single Motorcycle, ATV, Water Craft or Riding Lawn Mower whose frames are compatible with the lifting members of the Lift. Incompatibility is evident when the loaded motorcycle, ATV, etc. wobbles, feels unstable, and/or does not set securely on the lift pads. Tying down incompatible loads will not make the loads secure and may cause unexpected loss of load resulting in personal injury and/or property damage. This Lift is NOT suitable for lifting, leveling and/or positioning cars, trucks, SUV's or conveyances other than those specifically listed and approved above. This Lift is NOT suitable for lifting, leveling and/or positioning houses, construction trailers and dwellings in general. This product does not contain independent lifting devices, but is designed to be permanently assembled. Hydraulic unit is not to be used independently of the motorcycle lift.

SPECIFICATIONS

Model	Capacity	Base Size (LxW)	Min. Height	Max. Height
49154	1500 Lb	34 1/4" X 17 3/4"	4 1/2"	16 1/2"

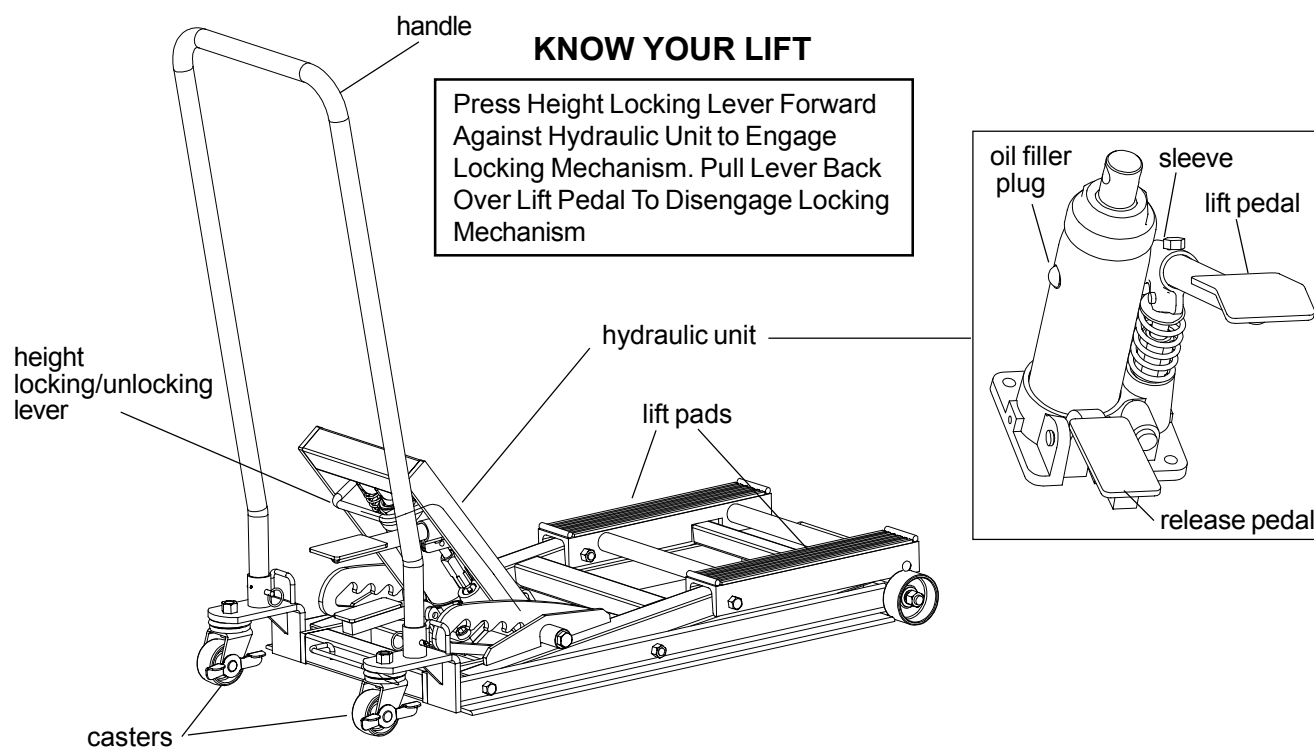


Figure 1 - Model 49154 Nomenclature

BEFORE USE (see Fig. 1)

1. Verify that the product and the application are compatible, if in doubt call Omega Technical Service (888) 332-6419.
2. Before assembling this product, read this operating manual completely and familiarize yourself thoroughly with the product, its components and recognize the hazards associated with its use.
3. Before assembly, place hydraulic unit in an upright, level position. Press release valve lever to ensure ram is fully retracted. Locate and remove the oil filler plug. As you remove the oil filler plug you may hear pressurized air escaping from the reservoir. This means you have successfully purged trapped air from the system. Ensure the oil level is just below the oil filler plug hole. Reinstall the oil filler plug.
4. After assembly, check to ensure that Lift rolls freely and that the pump operates smoothly before putting into service. Replace worn or damaged parts and assemblies with Omega Replacement Parts only. (See Replacement Parts Section). Lubricate as instructed in Maintenance Section.

WARNING

Study, understand and follow all printed materials provided with and on this device. Do not exceed rated capacity. Ensure load is compatible with lift pads. Center load on lift pads. After lifting load to desired height, ensure lift arm locking mechanism is engaged. Secure load to Lift using appropriate straps. Engage locking caster mechanism before working on or around loaded Lift. Move loaded Lift over smooth, level, seamless surfaces only. Before moving, ensure load has been lowered completely. Use only on hard, level surfaces capable of sustaining rated capacity loads. Lift only on areas of the load as specified by its manufacturer. Do not use for any purpose other than that for which this device is intended. Failure to heed these messages may result in personal injury and/or property damage.

ASSEMBLY

1. Install hydraulic unit into receiver and secure with provided 7.5mm X 22mm bolt.
2. Install lift foot pedal into sleeve.
3. Install handle into frame and secure using the provided pins (2).
4. Ensure assembly rolls freely, lifts, locks, and lowers easily. Get to know how the release pedal, lift pedal, and the height locking and unlocking mechanism work prior to loading the Lift.

! SAFETY MESSAGE !

Be sure all tools and personnel are clear before lowering load. No alterations shall be made to this device. Only attachments and/or adapters supplied by the manufacturer shall be used.

OPERATION

1. Position Lift under appropriate lift point, centering load on lift saddle.
2. Locate and pump the lift pedal until the lift saddle comes into contact with an appropriate lift point.
3. Only after centering the load, slowly and carefully raise the lift arm by pumping the lift foot pedal.
4. Lock both swivel casters by pressing down on the caster lever marked 'lock'.
5. Continue pumping until the load has reached desired height. Secure the load using appropriate tie down means. Four tie down loops have been provided on the frame of the Lift. Make sure that the height locking mechanism is fully engaged before working on or around the loaded Lift.
6. To lower, disengage height locking lever and depress release pedal. In some cases it may be necessary to slightly raise the lift arm before disengaging the height locking lever.

MAINTENANCE

Important: Keep Lift clean and well lubricated. Apply a couple of drops of light machine oil to all pivoting joints as needed. Thoroughly wipe up excess oil to help prevent slipping and falling. Use only a good grade hydraulic jack oil. Avoid mixing different types of fluid and NEVER use brake fluid, turbine oil, transmission fluid, motor oil or glycerin. Improper fluid can cause failure of the jack and the potential for sudden and immediate loss of load. We recommend Mobil DTE 13M or equivalent.

Adding oil

1. To check hydraulic oil level, unload Lift, lower lift arms completely, then remove hydraulic unit from Lift. Place hydraulic unit upright on a stable, level surface. Locate and remove oil filler plug.
2. Ensure the oil level is even with the oil filler plug hole. Reinstall the oil filler plug, then install hydraulic unit onto receiver. Secure with provided bolts.

Changing oil

For best performance and longest life, replace the complete fluid supply at least once per year.

1. With saddle fully lowered, remove hydraulic unit from Lift. Place hydraulic unit upright on a stable, level surface. Remove the oil filler plug.

MAINTENANCE (continued)

2. Lay the unit on its side and drain the fluid into a suitable container.

Note: Dispose of used hydraulic oil in accordance with local regulations.

3. Ensure the oil level is even with the oil filler plug hole. Reinstall the oil filler plug, then install hydraulic unit onto receiver.

Lubrication

A periodic coating of light lubricating oil to pivot points, axles and hinges will help to prevent rust and assure that wheels, casters and pump assemblies move freely.

MAINTENANCE (continued)

Cleaning

Periodically check the pump piston and ram for signs of rust or corrosion. Clean as needed and wipe with an oily cloth.

Storage

When lift is not in use, lifting arm should be stored in the fully retracted position.

TROUBLESHOOTING

Symptom	Possible Causes	Corrective Action
Hydraulic unit will not lift load	<ul style="list-style-type: none">• Release valve not tightly closed• Overload condition	<ul style="list-style-type: none">• Ensure release valve tightly closed• Remedy overload condition
Hydraulic unit bleeds off after lift	<ul style="list-style-type: none">• Release valve not tightly closed• Overload condition• Hydraulic unit malfunction	<ul style="list-style-type: none">• Ensure release valve tightly closed• Remedy overload condition• Contact Omega Tech. Service
Lift will not lower after unloading	<ul style="list-style-type: none">• Reservoir overfilled• Linkages binding	<ul style="list-style-type: none">• Drain fluid to proper level• Clean and lubricate moving parts
Poor lift performance	<ul style="list-style-type: none">• Fluid level low• Air trapped in system	<ul style="list-style-type: none">• Ensure proper fluid level• With ram fully retracted, follow Before Use instructions on Page 2, Step 3 to release trapped air
Will not lift to full extension	<ul style="list-style-type: none">• Fluid level low	<ul style="list-style-type: none">• Ensure proper fluid level

ONE YEAR LIMITED WARRANTY

For a period of one (1) year from date of purchase, **SFA Companies** will repair or replace, at its option, without charge, any of its products which fails due to a defect in material or workmanship, or which fails to conform to any implied warranty not excluded hereby.

Performance of any obligation under this warranty may be obtained by returning the warranted product, freight prepaid, to **SFA Companies** Warranty Service Department, 10939 N. Pomona Ave., Kansas City, MO 64153.

Except where such limitations and exclusions are specifically prohibited by applicable law, (1) the CONSUMER'S SOLE AND EXCLUSIVE REMEDY SHALL BE THE REPAIR OR REPLACEMENT OF DEFECTIVE PRODUCTS AS DESCRIBED ABOVE, and (2) **SFA Companies** SHALL NOT BE LIABLE FOR ANY CONSEQUENTIAL OR INCIDENTAL DAMAGE OR LOSS WHATSOEVER, and (3) THE DURATION OF ANY AND ALL EXPRESSED AND IMPLIED WARRANTIES, INCLUDING WITHOUT LIMITATION, ANY WARRANTIES OF MERCHANTABILITY AND FITNESS FOR A PARTICULAR PURPOSE, IS LIMITED TO A PERIOD OF ONE (1) YEAR FROM DATE OF PURCHASE.

Some states do not allow limitations on how long an implied warranty lasts, so the above limitation may not apply to you. Some states do not allow the exclusion or limitation of incidental or consequential damages, so the above limitation or exclusion may not apply to you. This warranty gives you specific legal rights, and you may also have other rights which vary from state to state.

REPLACEMENT PARTS

Available Parts: Please refer to the parts drawing when ordering parts. Not all components of the Lift are replacement items, but are illustrated as a convenient reference of location and position in the assembly sequence. When ordering parts, give Model number, serial number and description. Call or write for current pricing: SFA Companies, 10939 N. Pomona Ave. Kansas City, MO 64153, U.S.A. Tel:(888)332-6419 Fax:(816)891-6599 E-Mail: sales@omegalift.com Omega Website: <http://www.omegalift.com>

Model # 49154

Part. No.	Description	Quantity
1	front wheel assembly	2
2	rear caster assembly	2
3	hydraulic unit assembly	1
4	oil filler plug (not shown)	1
5	locking lever assembly	1
--	label (not shown)	1
--	manual (OIPM# 49154-ATV2)	1

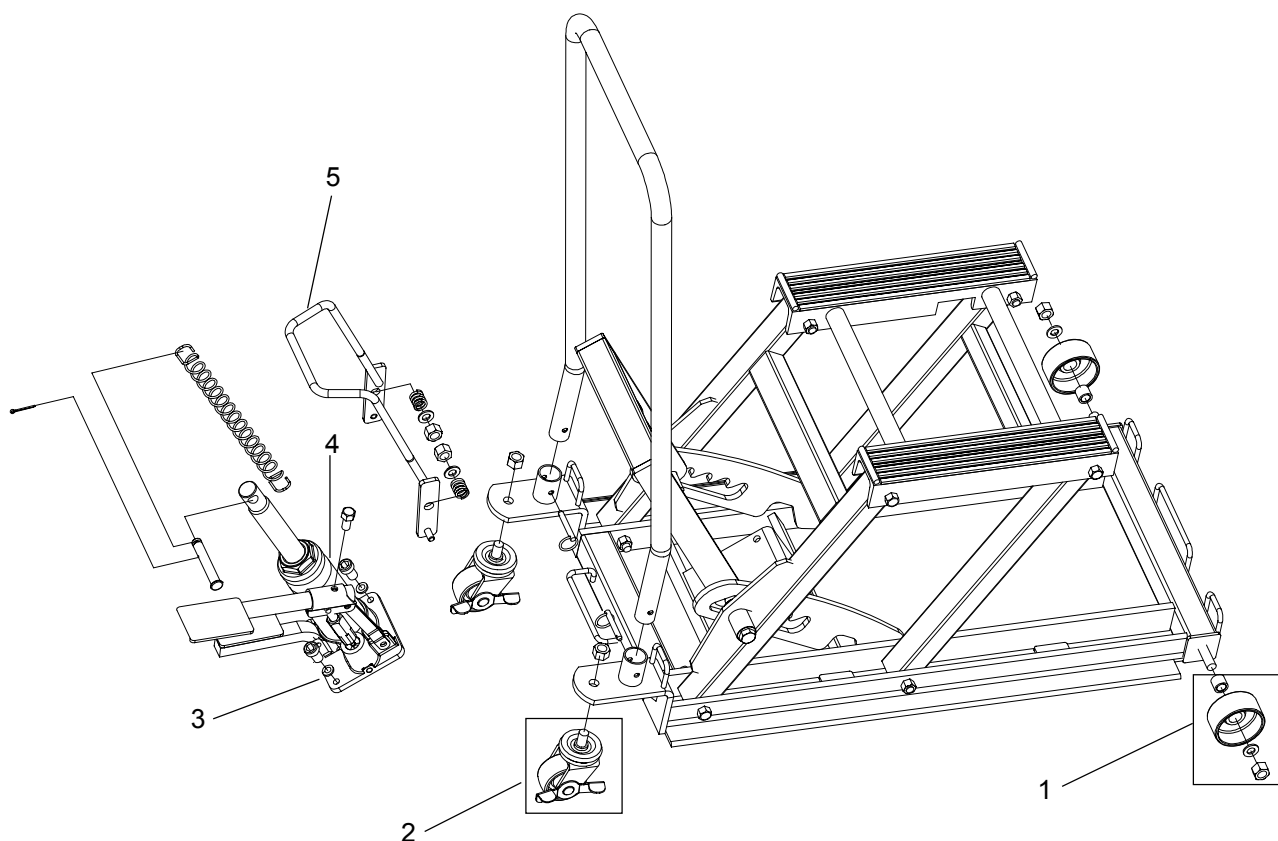


Figure 2 - Replacement Parts Illustration for Model 49154

Notes

[illegible]

SFA Companies

10939 N. Pomona Ave. Kansas City, MO 64153, U.S.A.

Tel:(888)332-6419 Fax:(816)891-6599 E-Mail:sales@omegalift.com Omega Website: <http://www.omegalift.com>

Notes

[illegible]

SFA Companies

10939 N. Pomona Ave. Kansas City, MO 64153, U.S.A.

Tel:(888)332-6419 Fax:(816)891-6599 E-Mail:sales@omegalift.com Omega Website: <http://www.omegalift.com>



[illegible]