



# Hydraulic Wheel Dolly

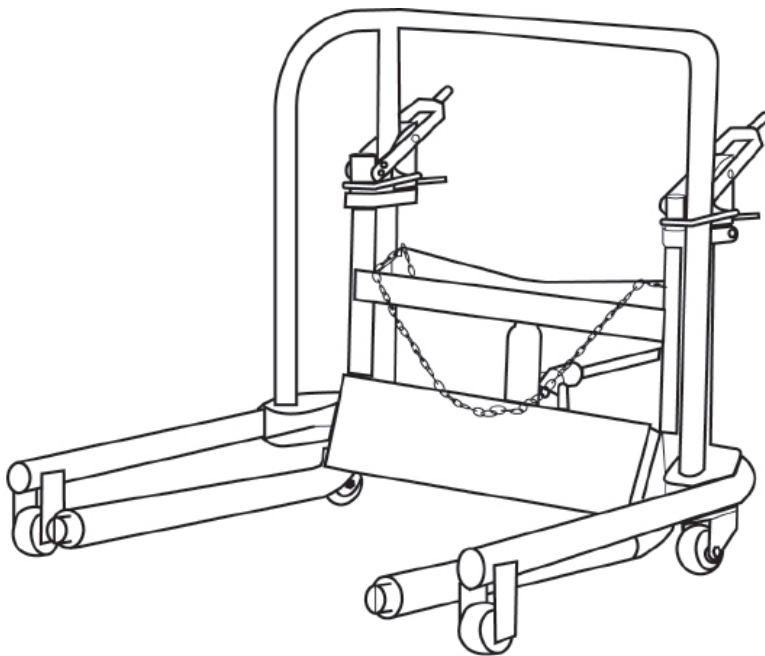
## Operating Instructions & Parts Manual

Model Number  
HW93765

Capacity  
3/4 Ton



**Made in the  
U.S.A.**



This is the safety alert symbol. It is used to alert you to potential personal injury hazards. Obey all safety messages that follow this symbol to avoid possible injury or death.

SFA Companies  
10939 N. Pomona Ave. Kansas City, MO 64153  
[customerservices@heinwerner-automotive.com](mailto:customerservices@heinwerner-automotive.com)

**Read this manual and follow all the Safety Rules and Operating Instructions before using this product**

HW93765-M0 rev 11172008


## SAFETY and GENERAL INFORMATION


**Save these instructions.** For your safety, read, understand, and follow the information provided with and on this wheel dolly before using. The owner and/or operator of this equipment shall have an understanding of this equipment and safe operating procedures before attempting to use. The owner and/or operator shall be aware that use and repair of this product may require special skills and knowledge. Instructions and safety information shall be conveyed in the operator's native language before use of this product is authorized. If any doubt exists as to the safe and proper use of this wheel dolly, remove from service immediately.

**Inspect before each use.** Do not use if broken, bent, cracked, or damaged parts (including labels) are noted. Any wheel dolly that appears damaged in any way, operates abnormally or is missing parts, shall be removed from service immediately and the manufacturer notified. If you suspect that the product was subjected to a shock load (a load dropped suddenly, unexpectedly upon it), immediately discontinue use until it has been checked by a factory authorized service center (contact distributor or manufacturer for list of Authorized Service Centers). It is recommended that an annual inspection be done by qualified personnel. Replace worn or damaged parts with Hein-Werner Authorized Replacement Parts only. Labels and owner's manuals are available from manufacturer.

## PRODUCT DESCRIPTION

Hein-Werner hydraulic wheel dolly is designed to facilitate the removal and installation of pneumatic tires and wheel assemblies found on many trucks, buses and trailers. This is **NOT** suitable for use as a wheel and tire puller. It is designed **ONLY** for use in removing up to rated capacity tire and wheel assemblies which are **not** bound and/or seized up at the brake drum or hub assemblies. This device is designed to be used in conjunction with jacks and jack stands.

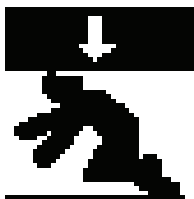
 **NEVER** use a wheel dolly as a **wheel pulling** device. Before transporting wheel assembly ensure that it is free from the hub or drum assembly and that it is secured to the wheel dolly using the provided securing means.

 **NEVER** load this device with more than the weight of the wheel assembly to be removed!  
**ENSURE** that the vehicle is securely positioned and supported by a **pair of appropriately rated jack stands**.

## SPECIFICATIONS

Model	Capacity	Lift Range	Lifting Arm Length	Lifting Arm Spread	Overall Size (L x W x H)
HW93765	3/4 ton	4" - 9"	23"	24"	36" x 35-1/2" x 31-1/2"

## WARNING



### To avoid crushing and related injuries and or property damage:

- **Read**, understand and follow all printed materials provided with and on this wheel dolly.
- Do Not exceed rated capacity.
- **Before** positioning wheel dolly, **ensure** that the vehicle is securely positioned and supported by a pair of appropriately rated jack stands.
- Use only on smooth, hard and level surfaces capable of sustaining the load.
- **Chock** each unlifted wheel assembly in both directions.
- **Be alert** and **sober** when using this product! **Never** operate this equipment when under the influence of drugs or alcohol.
- Before moving, lower the load to the lowest possible point and assure that the load is centered and secured with a load restraint device.
- Only attachments and/or adapters supplied by the manufacturer shall be used.
- No alterations shall be made to this product.
- Never use hydraulic power unit (jack) as a stand alone device.
- Apply load as close to the vertical position of the lifting member as possible.

## BEFORE USE (refer to Figures 1,2, and 3)

1. Verify that the product and the application are compatible, if in doubt call Hein-Werner Technical Service (816) 891-6390.
2. Before using this product, read the owner's manual completely and familiarize yourself thoroughly with the product, its components, and recognize the hazards associated with its use.
3. Assemble the handle for hydraulic unit.
4. To familiarize yourself with basic operation; position the hydraulic unit upright as shown in Fig. 2., assemble the handle, locate and engage the release valve with the slotted portion of the provided handle, then turn the release valve:
  - a. Clockwise until firm resistance is felt to further turning of the handle. This is the '**CLOSED**' release valve position used to **raise** the load.
  - b. Counter-clockwise, but no more than 1 turn from the closed position. This is the '**OPEN**' release valve position used to **lower** the load.
5. With ram plunger fully lowered, locate and remove the oil filler plug. Insert the handle into the handle sleeve; then pump 6 to 8 full strokes. Check oil level. Proper oil level is level with the bottom of the oil filler plug hole. Adjust as needed, reinstall the oil filler plug.
6. Place the hydraulic unit (Fig. 2) into the hydraulic unit holder located beneath the tool tray. Position the unit such that the saddle mates with the provided indentation. Adjustment of the saddle extension screw may be necessary.
7. Check to ensure the wheel dolly rolls freely and the hydraulic unit operates smoothly before putting into service. Replace worn or damaged parts with factory Authorized Replacement Parts only. Contact the manufacturer or distributor of this product for a list of factory authorized service centers. Lubricate as instructed in Maintenance Section.

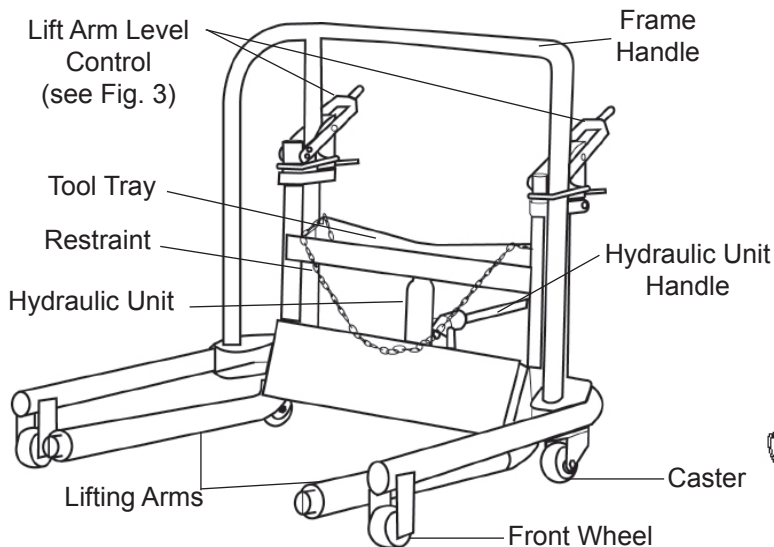


Figure 1 - Wheel Dolly Components

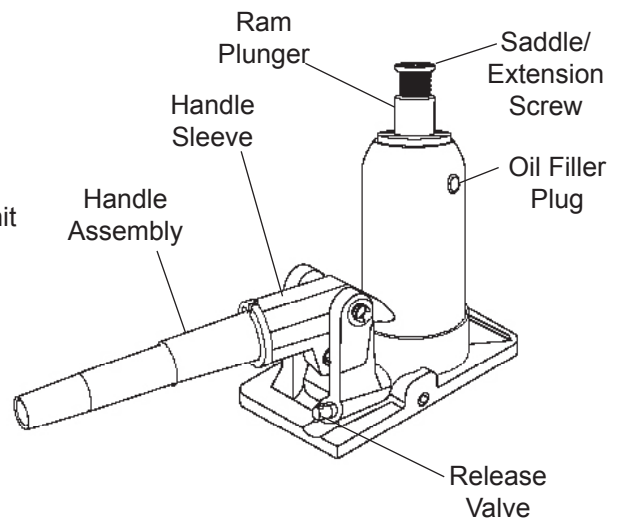


Figure 2 - Hydraulic Unit Components

### Lift Arm Level Control (see Fig.3)

Pull the Lift Arm Level Control (upper lever) upward and push the Lift Arm Level Lock (lower lever) downward simultaneously to adjust the lifting arms to a wide variety positions and angles.

If necessary, use the hydraulic unit handle to engage the Lift Arm Level Control lever to allow easier operation.

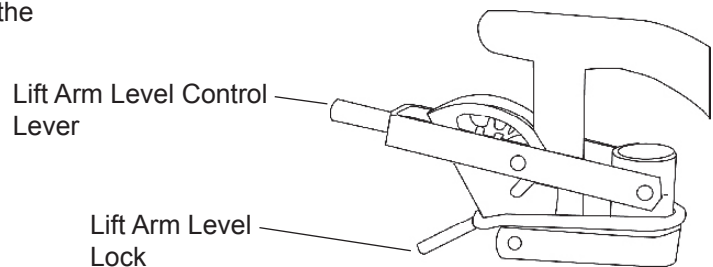


Figure 3 - Lift arm Leveling Mechanism

### Bleeding / Venting Trapped Air

With the release valve in the OPEN position (4b. above) and with saddle fully lowered, locate and remove the oil filler plug. Insert the handle into the handle sleeve; then pump 6 to 8 full strokes. This will help release any pressurized air which may be trapped within the reservoir. Reinstall the oil filler plug.

## OPERATION (refer to Fig. 1,2, & 3)

### VEHICLE PREPARATION

1. Locate vehicle on a hard, level surface, such as reinforced concrete, large enough to accommodate vehicle, jacks, jack stands, and wheel dolly.
2. Set the emergency brake **unless** the rear drum, tire and wheel are all to be removed as an assembly.
3. Chock **all** unlifted tires in both directions AND **take every precaution necessary** to ensure the set up is stable and will prevent **all** inadvertent vehicle movement.

### RAISING THE LIFTING ARMS

1. Locate and engage the release valve using the provided handle assy, then turn handle clockwise until firm resistance is felt to further thread engagement.



*Follow the vehicle manufacturers recommended removal and installation procedures for tire, wheel, hub, or axle assemblies as needed! **DO NOT** remove more than is recommended by the vehicle manufacturer!*

2. After the tire, wheel assembly has been loosened from the hub or axle and is ready to be removed, position the dolly under the assembly to be removed. Pump until load reaches desired height. Adjust lift arm tilt such that the tire, wheel assembly will nest securely between the lift arms without falling forward (toward the front wheels).

### LOADING THE WHEEL DOLLY



***NEVER** load this device with more than the weight of the wheel assembly to be removed!*

***ENSURE** that the vehicle is securely positioned and supported by a **pair of appropriately rated jack stands**.*



***NEVER** use a wheel dolly as a **wheel pulling** device. Before transporting wheel assembly, ensure that it is free from the hub or drum assembly and secured to the wheel dolly with the provided restraint.*

1. When the weight of the loosened tire and wheel assembly is supported by the wheel dolly, **carefully** roll the wheel dolly away from the drum or axle.

### LOWERING

1. Engage and slowly turn the release valve counterclockwise, but never more than 1 full turn.

### TRANSPORTING LOADED WHEEL DOLLY

1. Ensure that wheel assembly is secured to the wheel dolly by means of the provided restraint.
2. When wheel assembly has cleared the hub or the axle, lower the lift arms to the lowest position that will still allow wheel dolly wheel and caster movement.
3. Push or pull to desired location.



*Follow the vehicle manufacturers recommended removal and installation procedures for tire, wheel, hub, or axle assemblies as needed!*



*If the operating handle is worn, operates abnormally, or will not positively engage the release valve, immediately discontinue use of the jack until a replacement handle assembly can be acquired.*

## MAINTENANCE

Important: Use only a good grade hydraulic jack oil. Avoid mixing different types of fluid and **NEVER** use brake fluid, turbine oil, transmission fluid, motor oil or glycerin. Improper fluid can cause failure of the jack and the potential for sudden and immediate loss of load. We recommend Hein-Werner hydraulic jack oil HW93291 or equivalent.

### ADDING OIL TO HYDRAULIC UNIT

1. With saddle fully lowered set jack in its upright, level position. Locate and remove oil filler plug.
2. Fill with oil even with the bottom of oil filler plug hole. Reinstall the oil filler plug.

### CHANGING OIL IN HYDRAULIC UNIT

For best performance and longest life, replace the complete fluid supply at least once per year.

1. Remove hydraulic unit from wheel dolly. Set hydraulic unit upright on a hard, level surface.
2. With saddle fully lowered, remove the oil filler plug.
3. Lay the jack on its side and drain the fluid into a suitable container.

**Note:** Dispose of hydraulic fluid in accordance with local regulations.

4. Fill with oil even with the bottom of oil filler plug hole. Reinstall the oil filler plug.

### LUBRICATION

A periodic coating of light lubricating oil to wheel dolly and hydraulic unit pivot points will help to ensure that all moving parts function smoothly.

### CLEANING

Periodically check the pump piston and ram for signs of rust or corrosion. Clean as needed and wipe with an oily cloth.

**Note:** Never use sandpaper or abrasive material on these surfaces.

### STORAGE

Store the jack with the pump piston, ram plunger, and saddle fully lowered and the release valve open, but never more than 1 turn. This will help prevent rust and corrosion to those critical surfaces.

## TROUBLESHOOTING

Symptom	Possible Causes	Corrective Action
Hydraulic unit will not lift load	• Release valve not tightly closed	• Ensure release valve tightly closed
Hydraulic unit *bleeds off after lifting	• Release valve not tightly closed • Hydraulic unit malfunction	• Ensure release valve tightly closed • Contact Hein-Werner Tech. Service
Hydraulic unit will not lower after unloading	• Reservoir overfilled • Linkages binding	• Drain fluid to proper level • Clean and lubricate moving parts
Poor performance	• Fluid level low • Air trapped in system	• Ensure proper fluid level • With ram fully retracted, remove oil filler plug to let pressurized air escape, then reinstall oil filler plug
Will not lift to full extension	• Fluid level low	• Ensure proper fluid level

(\*) "bleeds off" refers to an unexpected loss of load height due to a loss of hydraulic pressure

## REPLACEMENT PARTS

Not all components of the wheel dolly are replacement items, but are illustrated as a convenient reference of location and position in the assembly sequence. When ordering parts, give Model number, parts number and parts description. Call or write for current pricing: Hein-Werner Customer Support, 10939 N. Pomona Ave. Kansas City, MO 64153  
E-mail: [customerservices@heinwerner-automotive.com](mailto:customerservices@heinwerner-automotive.com) Phone: (816) 891-6390

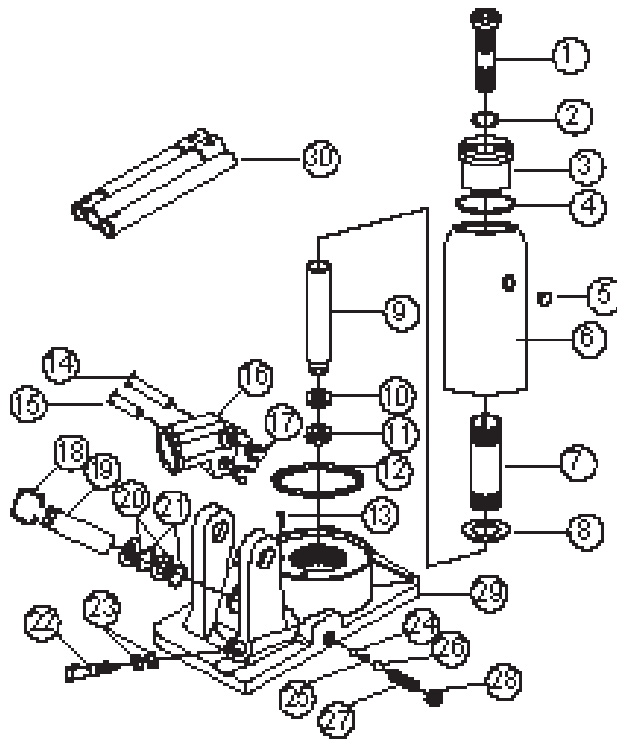


Figure 4 - Parts Illustration for Wheel Dolly HW93765 - Hydraulic Unit

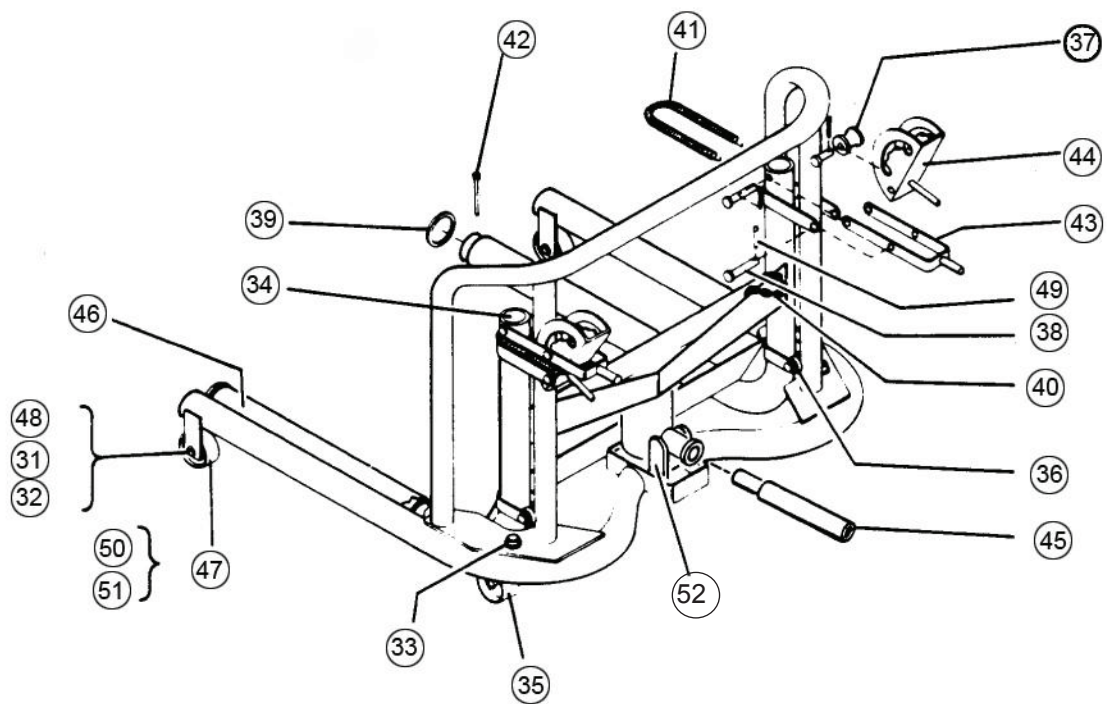


Figure 5 - Parts Illustration for Wheel Dolly HW93765 - Main Frame

### **Replacement Parts List for HW93765**

Item	Part No.	Description	Qty
1	N/A	Extension Screw	1
2	*	O-ring	1
3	N/A	Top Nut	1
4	*	Gasket	1
5	*	Filler Plug	1
6	N/A	Reservoir	1
7	N/A	Cylinder	1
8	5308-00235-000	Washer	1
9	N/A	Ram Plunger	1
10	*	Back-up Ring	1
11	*	U-cup	1
12	*	Gasket	1
13	B020-10003-000	Filter	1
14	5403-10031-000	Pin	1
15	5903-10064-000	Pin	1
16	B02B-10004-000	Handle Sleeve	1
17	5305-00008-000	Washer	2
18	B02B-14002-000	Pump Piston Ring	1
19	B02B-14001-000	Pump Piston	1
20	*	O-ring	2
21	*	Back-up Ring	2
22	*	Release Valve	1
23	*	O-ring	2
24	5601-00476-000	Steel Ball, 4.76mm dia	1
25	B02B-10006-000	Spring	1
26	5601-00750-000	Steel Ball, 7.5mm dia	1
27	B02B-10005-000	Spring	1
28	5109-11085-000	Screw	1
29	N/A	Base	1
30	B02B-20000-000	Handle Assy	1
(*)	B02B0S-031	Repair Kit, Hydraulic Unit	1

Item	Part No.	Description	Qty
31	207169	Nut	2
32	209964	Washer	2
33	214557	Retaining Ring	2
34	214567	Button Plug	
35	221346	Caster	
36	221384	Roller	
37	221385	Roller	
38	221386	Pin	
39	221390	Washer	
40	221406	Chain	
41	221407	Tension Spring	
42	221408	Cotter Pin	
43	221409	Handle Socket & Bracket	
44	221412	Adjusting Dog & Handle	
45	260485	Handle	
46	231236	Roller & Bearing	
47	233153	Wheel & Bushing Ass'y.	
48	233154	Screw	
49	233869	Cotter Pin	
50	233153	Wheel	
51	234001	Bushing	
52	HW2023	Hydraulic Unit	

(\*) indicates items included in Repair Kit





## **TWO YEARS LIMITED WARRANTY**

For a period of two (2) years from date of purchase, SFA Companies will repair or replace, at its option, without charge, any of its products which fails due to a defect in material or workmanship under normal usage. This limited warranty is a consumer's exclusive remedy.

Performance of any obligation under this warranty may be obtained by returning the warranted product, freight prepaid, to SFA Companies Warranty Service Department, 10939 N. Pomona Ave., Kansas City, MO 64153.

Except where such limitations and exclusions are specifically prohibited by applicable law:

- (1) THE CONSUMER'S SOLE AND EXCLUSIVE REMEDY SHALL BE THE REPAIR OR REPLACEMENT OF DEFECTIVE PRODUCTS AS DESCRIBED ABOVE
- (2) SFA COMPANIES SHALL NOT BE LIABLE FOR ANY CONSEQUENTIAL OR INCIDENTAL DAMAGE OR LOSS WHATSOEVER.
- (3) ANY IMPLIED WARRANTIES, INCLUDING WITHOUT LIMITATION THE IMPLIED WARRANTIES OF MERCHANTABILITY AND FITNESS FOR A PARTICULAR PURPOSE, SHALL BE LIMITED TO TWO YEARS, OTHERWISE THE REPAIR, REPLACEMENT OR REFUND AS PROVIDED UNDER THIS EXPRESS LIMITED WARRANTY IS THE EXCLUSIVE REMEDY OF THE CONSUMER, AND IS PROVIDED IN LIEU OF ALL OTHER WARRANTIES, EXPRESS OR IMPLIED.
- (4) ANY MODIFICATION, ALTERATION, ABUSE, UNAUTHORIZED SERVICE OR ORNAMENTAL DESIGN VOIDS THIS WARRANTY AND IS NOT COVERED BY THIS WARRANTY.

Some states do not allow limitations on how long an implied warranty lasts, so the above limitation may not apply to you. Some states do not allow the exclusion or limitation of incidental or consequential damages, so the above limitation or exclusion may not apply to you. This warranty gives you specific legal rights, and you may also have other rights which vary from state to state.