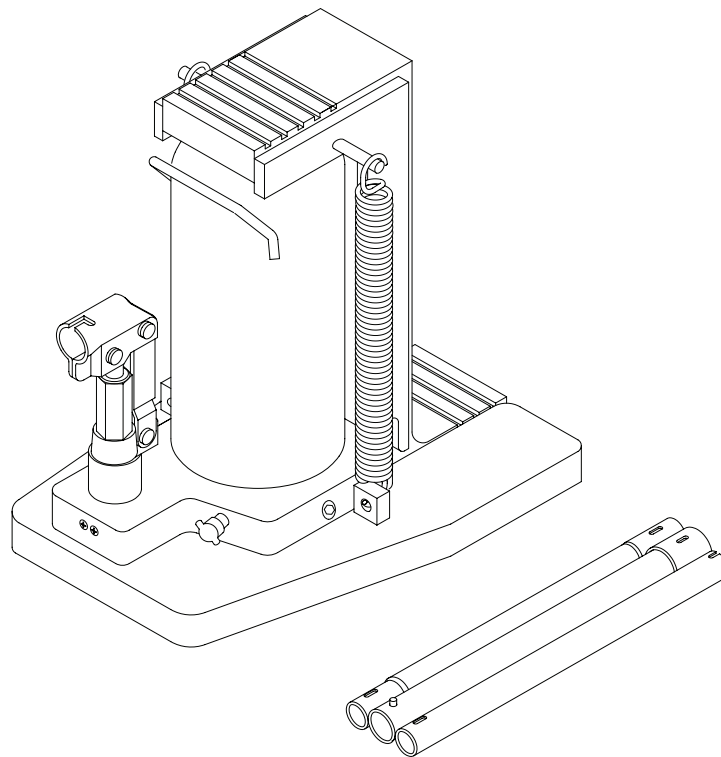




Toe Jack Instruction Manual

MODELS:	J13060	3-Ton
	J13120	6-Ton
	J13200	10-Ton
	J13300	15-Ton

SFA Companies 10939 N. Pomona Ave. Kansas City, MO 64153
Tel: 888-332-6419 Fax: 816-891-6599
E-mail: sales@bvahydraulics.com Website: www.bvahydraulics.com



This is the safety alert symbol. It is used to alert you to potential personal injury hazards. Obey all safety messages that follow this symbol to avoid possible injury or death.

Read this manual and follow all the Safety Rules and Operating Instructions before using this product.

SAFETY AND GENERAL INFORMATION

Save these instructions. For your safety, read, understand, and follow the information provided with and on this device before using. The owner and/or operator shall have an understanding of the device, its operating characteristics and safety operating instructions before operating the equipment. The owner and/or operator shall be aware that use and repair of this product may require special skills and knowledge. Instructions and safety information shall be read to and discussed with the operator in the operator's native language, making sure that the operator comprehends their contents, before use of this equipment is authorized. If any doubt exists as to the safe and proper use of this device, remove from service immediately.

Inspect before each use. Do not use if abnormal conditions such as cracked welds, damaged, loose or missing parts are noted. Any equipment that appears damaged in any way, is found to be worn, or operates abnormally shall be removed from service until repaired. If the equipment has been or is suspected to have been subjected to an abnormal load or shock, immediately discontinue use until inspected by a factory authorized repair facility (contact distributor or manufacturer for list of authorized repair facilities). It is recommended that an annual inspection be made by an authorized repair facility. Labels and Operator's Manuals are available from the manufacturer.

PRODUCT DESCRIPTION

This product is designed to lift, position, or move, but not sustain, rated capacity loads. It is not designed to be used as a stand-alone device. Any load lifted, positioned, or otherwise moved by this device, must immediately be supported by appropriately rated mechanical means. A wide variety of applications exist for this category of product. Special skill, knowledge and training may be required for a specific task and this product may not be suitable for all jobs listed. Unsuitable applications include applications that call for a device to lift, position, move or support persons, animals, hazardous materials, mobile homes and dwellings in general, mirrors, plate glass or to connect/secure hatches, components, and materials between bulkheads. The user ultimately must make the decision regarding suitability of the product for any given task and therefore accept responsibility for that decision.

TECHNICAL SPECIFICATIONS

J13060 rated capacity:	6,000 lbs. (3 tons)
J13120 rated capacity:	12,000 lbs. (6 tons)
J13200 rated capacity:	20,000 lbs. (10 tons)
J13300 rated capacity:	30,000 lbs. (15 tons)

Hydraulic Pressure @ rated capacity:

J13060:	4185 psi
J13120:	4000 psi
J13200:	5400 psi
J13300:	7750 psi

WARNING

- *Study, understand, and follow all instructions before operating this device.*
- *Do not exceed rated capacity.*
- *Use only on hard level surfaces.*
- *Lifting device only. Immediately after lifting, support load with appropriate means.*
- *Lift only on those areas of a vehicle as specified by the vehicle manufacturer.*
- *No alterations shall be made to this product.*
- *Only attachments and/or adapters supplied by the manufacturer shall be used.*
- *Failure to heed these markings may result in personal injury and/or property damage.*

PREPARATION

Before Use

1. Before using this jack, read the operator's manual completely and familiarize yourself thoroughly with the product, its components and recognize the hazards associated with its use.
2. Verify that the product and application are compatible.
3. Assemble handle, ensure spring clips align with slots. Replace reservoir oil plug with Vent Screw provided
4. To familiarize yourself with basic operation, use the notched end of provided Pump Handle to engage and turn the Release Valve:
 - a. *Clockwise* until firm resistance is felt to further turning. This is the '**CLOSED**' Release Valve position used to raise the ram plunger.
 - b. *Counter-clockwise*, but no more than 1/2 turn from the closed position. This is the '**OPEN**' Release Valve position used to lower the Ram Plunger.
5. With Ram Plunger fully retracted and release valve closed, pump the operating handle. If Ram Plunger responds immediately, jack is ready for use. If jack does not respond, follow **Bleeding/Venting Trapped Air** instruction below.
6. Check that the pump operates smoothly and that the Extension Screw will thread up/down easily before putting into service. Replace worn or damaged parts and assemblies with Omega authorized replacement parts only.

Bleeding/Venting Trapped Air

With the Release Valve in the OPEN position (step 4b above) and with Ram Plunger fully lowered, locate and remove the Oil Filler Plug/Screw. Insert the Pump Handle into the Handle Sleeve; then pump 6 to 8 full strokes. This will help release any pressurized air which may be trapped within the reservoir. Oil level should be even with the bottom of the oil filler hole. Reinstall oil reservoir Vent Screw.

SPECIFICATIONS

Model	Capacity	Base Size (l" x w")	Toe Saddle Min. / Max Height	Head Saddle Min. / Max. Height	Hydraulic Lift
J13060	3 Ton	8-5/8 x 7-1/2	5/8" / 5-3/4"	9" / 14-1/8"	5-1/8"
J13120	6 Ton	11 x 7-1/2	7/8" / 6"	10-1/2" / 15-5/8"	5-1/8"
J13200	10 Ton	11-5/8 x 9-1/4	1-1/8" / 6-1/4"	11" / 16-1/8"	5-1/8"
J13300	15 Ton	12-1/2 x 10-3/4	1-1/8" / 6-5/8"	13-1/8" / 18-5/8"	5-1/2"

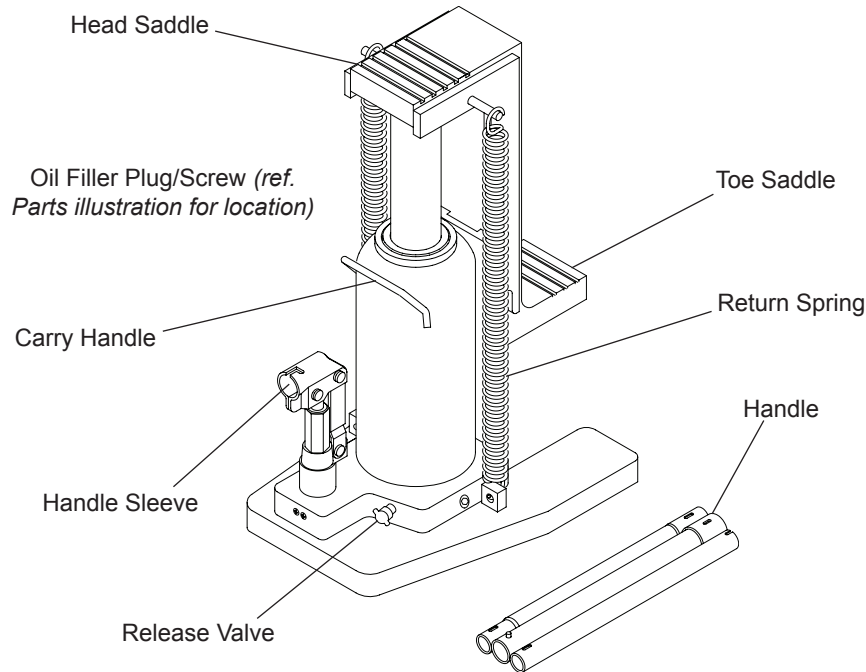


Figure 1 - Typical Toe Jack Components

OPERATION

Raising the Ram Plunger

1. Use the handle to engage and turn the release valve clockwise until firm resistance is felt to further thread engagement.
2. Pump until load reaches desired height. **Immediately** secure with appropriately rated mechanical devices.
It is recommended you follow the load with cribbing and blocking where practical.

⚠ WARNING: *Never allow personnel to work or pass under a load until the load is secured by cribbing, blocking, or other mechanical means.*

Lowering

⚠ WARNING: *Clear all personnel and tools before lowering load. Control the rate of descent of the load at all times. The more you open the release valve, the faster the load will descend.*

1. Use the manufacturer's provided operating handle to engage and slowly turn the release valve counter-clockwise, but no more than 1 turn.

⚠ WARNING: *If the operating handle is damaged, operates abnormally, or will not positively engage the release valve, immediately discontinue use of the jack until a manufacturer's replacement handle assembly can be acquired.*

2. Push ram down and handle sleeve in to reduce exposure to rust and contamination after removing jack from under load.

MAINTENANCE

NOTICE: Use premium quality hydraulic jack oil. Avoid mixing different types of fluid and NEVER use brake fluid, turbine oil, transmission fluid, motor oil or glycerin. Improper fluid can cause premature failure of the jack and the potential for sudden and immediate loss of load.

Adding Oil

1. With saddle fully lowered set jack in its upright, level position. Locate and remove oil filler plug/screw.
2. Fill with oil even with the bottom of the oil filler hole. Reinstall the oil filler plug/screw.

Changing Oil

For best performance and longest life, replace the complete fluid supply at least once per year.

1. With saddle fully lowered set jack in its upright, level position. Locate and remove oil filler plug/screw.
2. Lay the jack on its side and drain the fluid into a suitable container.

NOTICE: Dispose of hydraulic fluid in accordance with local environmental regulations.

3. Fill with oil even with the bottom of the oil filler hole. Reinstall the oil filler plug/screw.

Lubrication


A periodic coating of light lubricating oil to pivot points will help to ensure that pump piston linkages move freely. Do not apply oil to saddle area.

Cleaning

Periodically check the pump piston and ram plunger/saddle for signs of rust or corrosion. Clean as needed and wipe with a clean, oil soaked rag. Do not apply oil to saddle area.

Storage

Store the jack with pump piston, ram plunger/saddle fully lowered and release valve open, but never more than 1 turn. This will help prevent rust and corrosion to those critical surfaces.

 **WARNING:** The paint on this product contains lead, a chemical known in the State of California to cause cancer, birth defects and other reproductive harm. Do not ingest paint chips and keep product away from children. Wash hands after each use.

TROUBLESHOOTING

Symptom	Possible Causes	Corrective Action
Jack will not pressurize	<ul style="list-style-type: none">• Release valve not tightly closed• Load is too heavy	<ul style="list-style-type: none">• Ensure release valve tightly closed• Consider higher capacity jack
Jack bleeds off after lift (load slowly and unintentionally lowers)	<ul style="list-style-type: none">• Hydraulic unit malfunction	<ul style="list-style-type: none">• Contact Service Center
While lowering, fluid leaks from reservoir area. Jack saddle will not descend to lowest advertised height.	<ul style="list-style-type: none">• Reservoir overfilled• Ram plunger/cylinder deformed, seized up in ram cylinder and/or top nut, likely the result of off-center loading	<ul style="list-style-type: none">• Drain fluid to proper level• Contact Service Center
Ram plunger will not remain lowered after released from contact with load (creeps back up)	<ul style="list-style-type: none">• Air trapped in system	<ul style="list-style-type: none">• Perform Bleeding/Venting Trapped Air procedure.
Poor lift performance	<ul style="list-style-type: none">• Fluid level low• Air trapped in system• Hydraulic unit malfunction	<ul style="list-style-type: none">• Ensure proper fluid level• Perform Bleeding/Venting Trapped Air procedure.• Contact Service Center
Will not lift to full extension	<ul style="list-style-type: none">• Fluid level low	<ul style="list-style-type: none">• Ensure proper fluid level



Toe Jack Service Parts

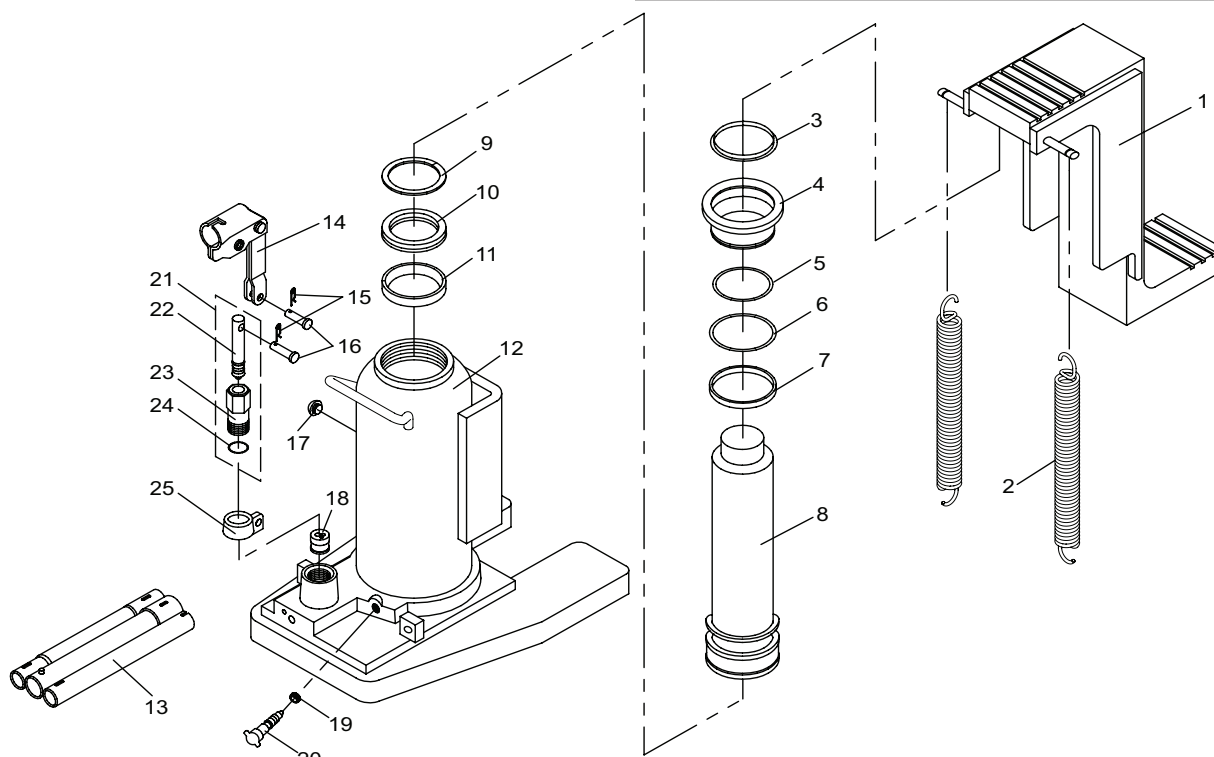
MODEL: J13120 - 6 Ton Capacity

SFA Companies 10939 N. Pomona Ave. Kansas City, MO 64153
E-mail: sales@bvahydraulics.com Website: www.bvahydraulics.com

Not all components of the jack are replacement items, but are illustrated as a convenient reference of location and position in the assembly sequence.

Item	Part Number	Description	Qty
1	186-3-1108-109	Saddle	1
2	522-2-0206-104	Return Spring	2
3	*	Dust Wiper	1
4	186-6-1810-304	Cylinder Fastener	1
5	*	O-ring	1
6	*	O-ring	1
7	186-6-1204-103	Guide Ring	1
8	N/A	Piston Rod	1
9	*	Back-up Ring	1
10	*	U-cup	1
11	*	Guide Ring	1
12	N/A	Base Assy	1
13	181-3-2100-103	Handle Assy	1

Item	Part Number	Description	Qty
14	226-3-1300-102	Handle Sleeve Assy	1
15	511-5-0012-016	Snap Pin	2
16	518-4-0070-307	Pin	2
17	* 505-9-0092-207	Oil Filler Plug	1
18	A20-4-1500-106	Hyd Cartridge Assy	1
19	*	Oil Seal	1
20	238-6-1701-403	Release Valve	1
21	226-4-1415-105	Pump Assy	1
22	N/A	Pump Piston	1
23	N/A	Pump Cylinder	1
24	*	O-ring	1
25	266-2-1402-108	Swivel Seat	1
*	186-3-9906-107	Seal Kit	1



(*)- Items available only as Seal Kit. Replacement requires special skills, knowledge, and equipment. Only an authorized service center may perform the repair and/or replacement of these items.

N/A - Not user serviceable



Toe Jack Service Parts

MODEL: J13060 - 3 Ton Capacity

SFA Companies 10939 N. Pomona Ave. Kansas City, MO 64153
 Tel: 888-332-6419 Fax: 816-891-6599
 E-mail: sales@bvahydraulics.com Website: www.bvahydraulics.com

Item	Part Number	Description	Qty
1	649-1-0060-407	Bolt	6
2	136-3-1108-109	Saddle Assy	1
3	136-6-5303-105	Roll Pillar	1
4	522-2-0206-104	Retaining Spring	2
5	115-6-1808-102	Retainer Ring	1
6	*	O-ring	1
7	136-6-1204-103	Guide Ring	1
8	*	O-ring	1
9	136-6-1107-105	Slide Track	2
10	N/A	Piston Rod	1
11	*	Back-up Ring	1
12	*	U-cup	1
13	599-7-0360-103	Guide Ring	1
14	136-5-5303-109	Roll Pillar	2
15	N/A	Base Assy.	1
16	649-1-0080-046	Bolt	1
17	*	Washer	1
18	511-2-0050-025	Spring	1
19	N/A	Steel Ball	2
20	*	Oil Seal	1
21	238-6-1701-403	Release Valve	1

Item	Part Number	Description	Qty
22	414-6-1216-107	Needle Valve	1
23	512-2-0067-010	Spring	1
24	*	O-ring	1
25	N/A	Valve Cap	1
26	414-6-1215-307	Screw	1
27	505-9-0092-207	Oil Filler Plug	1
28	518-4-0070-207	Pin	2
29	511-5-0012-016	Snap Pin	2
30	226-3-1300-102	Handle Sleeve Assy	1
31	226-4-1415-105	Pump Assy.	1
32	N/A	Pump Piston	1
33	*	O-ring	1
34	*	Oil Seal Assy	1
35	N/A	Pump Cylinder	1
36	*	O-ring	1
33	*	Washer	1
34	226-6-1402-108	Swivel Seat	1
35	181-3-2100-103	Handle Assy	1
*	136-3-9906-107	Repair Kit	1

(*) - Items available only as Seal Kit. Replacement requires special skills, knowledge, and equipment. Only an authorized service center may perform the repair and/or replacement of these items.

N/A - Not user serviceable

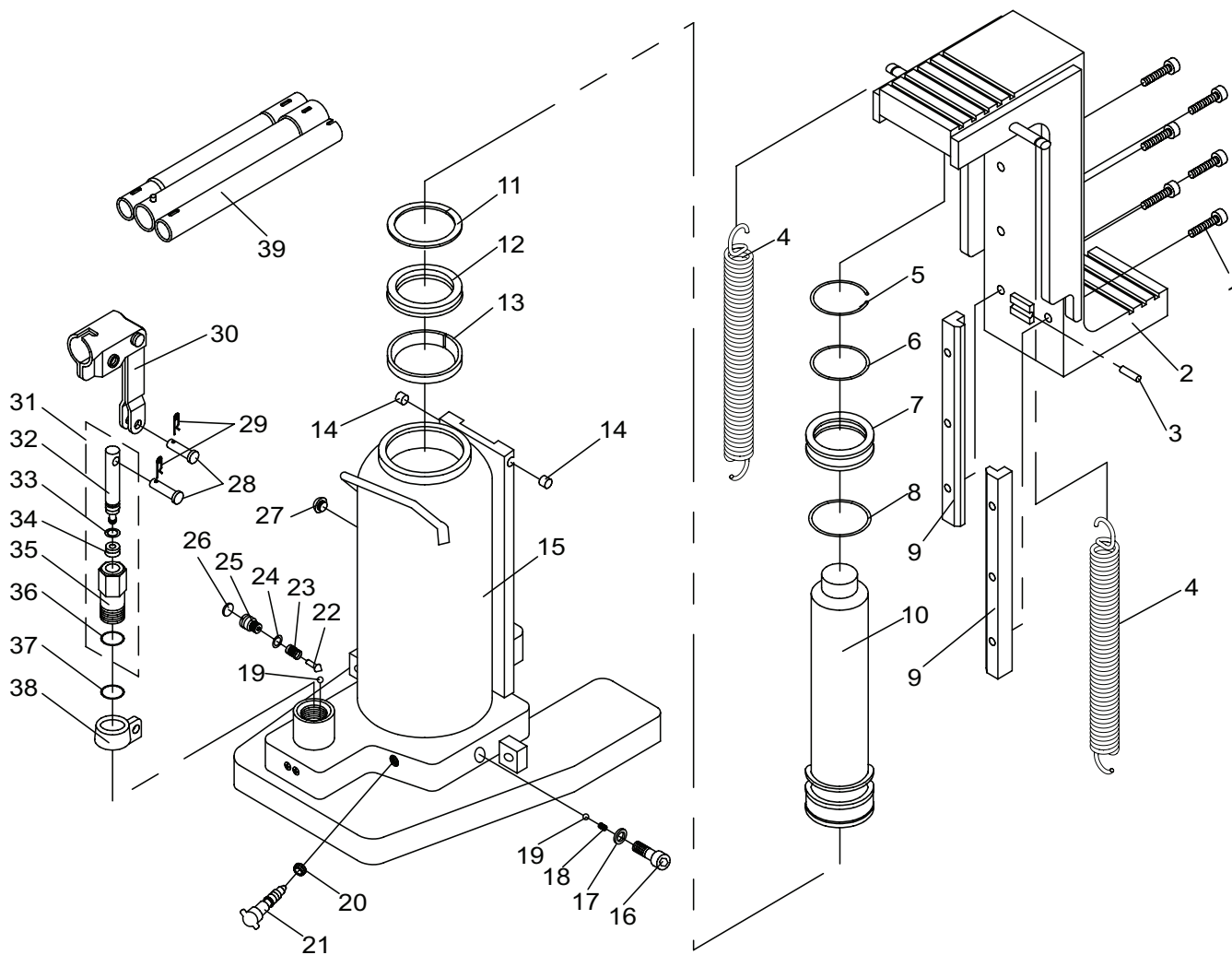


Toe Jack Service Parts

MODEL: J13060 - 3 Ton Capacity

SFA Companies 10939 N. Pomona Ave. Kansas City, MO 64153
 Tel: 888-332-6419 Fax: 816-891-6599
 E-mail: sales@bvahydraulics.com Website: www.bvahydraulics.com

Not all components of the jack are replacement items, but are illustrated as a convenient reference of location and position in the assembly sequence.





Toe Jack Service Parts

MODEL: J13200 - 10 Ton Capacity

SFA Companies 10939 N. Pomona Ave. Kansas City, MO 64153
E-mail: sales@bvahydraulics.com Website: www.bvahydraulics.com

Item	Part Number	Description	Qty
1	226-3-1108-100	Saddle	1
2	522-2-0206-104	Return Spring	2
3	226-6-1808-106	Retainer Ring	1
4	*	Dust Wiper	1
5	N/A	Dust Wiper Set	1
6	226-5-1204-108	Guide Ring	2
7	*	O-Ring	1
8	N/A	Piston Rod	1
9	*	Back-up Ring	1
10	*	U-cup	1
11	226-6-1209-104	Bearing	2
12	N/A	Base Assy	1
13	G55-4-1900-105	Vent Screw Assy	1
14	226-3-1300-102	Handle Sleeve Assy	1
15	511-5-0012-016	Snap Pin	2
16	518-4-0070-307	Pin	2
17	*	O-ring	1
18	N/A	Oil Filler Screw	1
19	324-4-1900-208	Oil Filler Screw Assy	1
20	A20-4-1500-106	Hyd Cartridge Assy	1
21	*	Oil Seal	1
22	238-6-1701-403	Release Valve	1
23	226-4-1415-105	Pump Assy	1
24	N/A	Pump Piston	1
25	*	O-ring	1
26	*	Oil Seal Assy	1
27	N/A	Pump Cylinder	1
28	*	O-ring	1
29	226-6-1402-108	Swivel Seat	1
30	181-3-2100-103	Handle Assy	1
*	226-3-9906-108	Seal Kit	1

(*) - Items available only as Seal Kit. Replacement requires special skills, knowledge, and equipment. Only an authorized service center may perform the repair and/or replacement of these items.

N/A - Not user serviceable

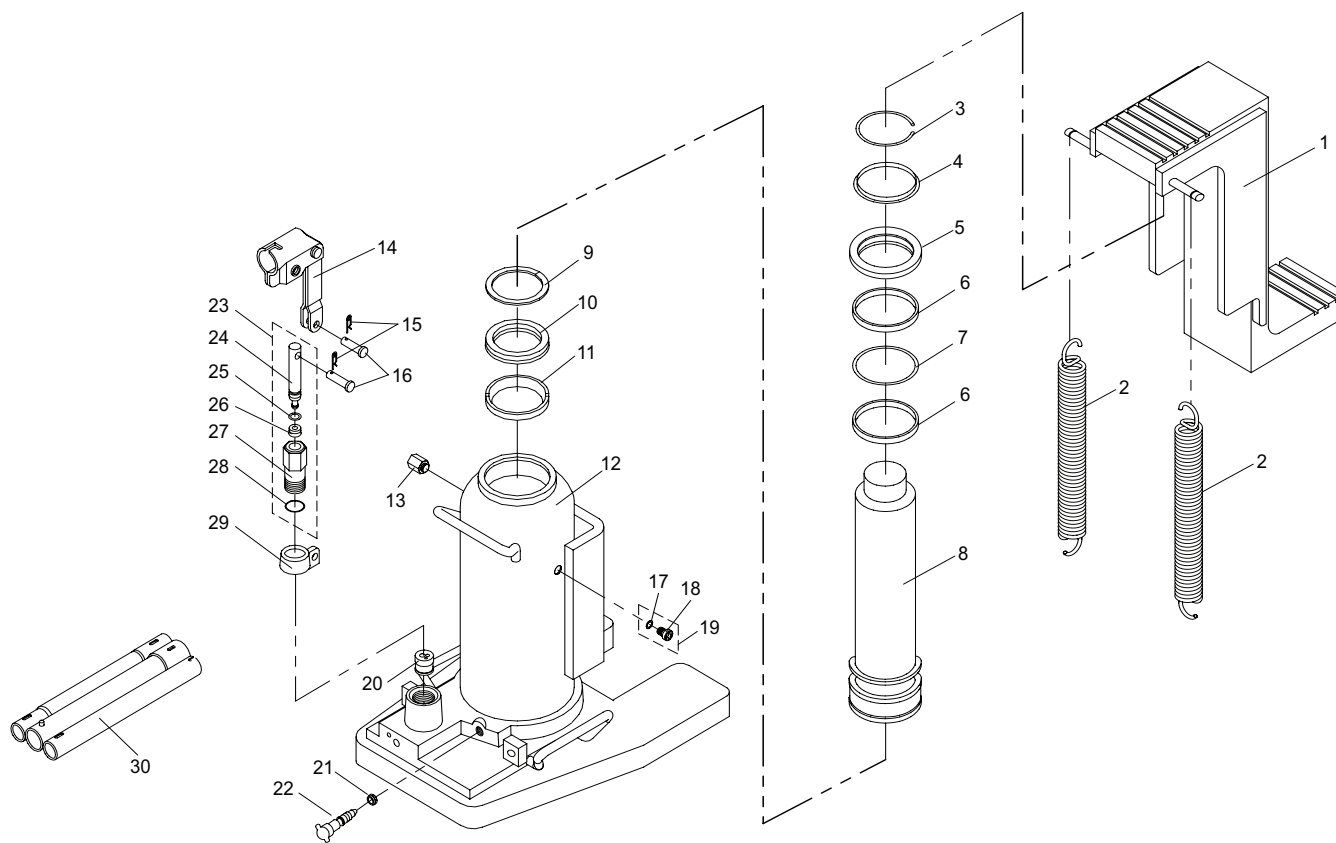


Toe Jack Service Parts

MODEL: J13200 - 10 Ton Capacity

SFA Companies 10939 N. Pomona Ave. Kansas City, MO 64153
E-mail: sales@bvahydraulics.com Website: www.bvahydraulics.com

Not all components of the jack are replacement items, but are illustrated as a convenient reference of location and position in the assembly sequence.





Toe Jack Service Parts

MODELS: J13300 - 15 Ton Capacity

SFA Companies 10939 N. Pomona Ave. Kansas City, MO 64153
 Tel: 888-332-6419 Fax: 816-891-6599
 E-mail: sales@bvahydraulics.com Website: www.bvahydraulics.com

Item	Part Number	Description	Qty
1	196-3-1600-101	Base Assy	1
2	324-4-1900-208	Filler Screw Assy	1
3	599-7-0700-101	Guide Ring	2
4	522-7-0700-207	U-cup	1
5	579-7-0700-206	Back-up Ring	1
6	196-6-1201-105	Ram Piston	1
7	511-7-0700-909	O-ring	1
8	511-7-0635-106	O-ring	1
9	196-6-1301-109	Guide Ring	1
10	G57-6-1209-101	Buckle Ring	1
11	G46-6-1301-205	Handle Sleeve	1
12	G62-6-1309-108	Linkage	1
13	196-3-1400-103	Piston Pump Assy	1
14	G62-6-1402-108	Bracket	1
15	515-3-0150-106	Copper Washer	1
16	566-4-0080-508	Link Pin	3
17	513-5-0016-018	Retaining Pin	3

Item	Part Number	Description	Qty
18	238-4-1700-207	Release Valve Assy	1
19	601-7-0008-009	Steel Ball	2
20	503-9-0067-103	Spring Cap	1
21	644-1-0080-004	Screw	1
22	414-6-1216-107	Thimble	1
23	512-2-0067-010	Safety Spring	1
24	511-7-0080-400	O-ring	1
25	414-6-1215-307	Relief Screw	1
26	509-9-0145-109	Safety Valve Lid	1
27	512-2-0063-104	Compression Spring	1
28	601-7-0012-000	Steel Ball	1
29	552-2-0080-106	Compression Spring	1
30	532-3-0180-100	Combination Washer	1
31	A16-6-5006-104	Screw	1
32	522-2-0260-058	Return Spring	2
33	196-3-1100-101	Slider Assy	1
34	196-4-2100-102	Handle Assy	1

(*) - Items available only as Seal Kit. Replacement requires special skills, knowledge, and equipment. Only an authorized service center may perform the repair and/or replacement of these items.
 N/A - Not user serviceable

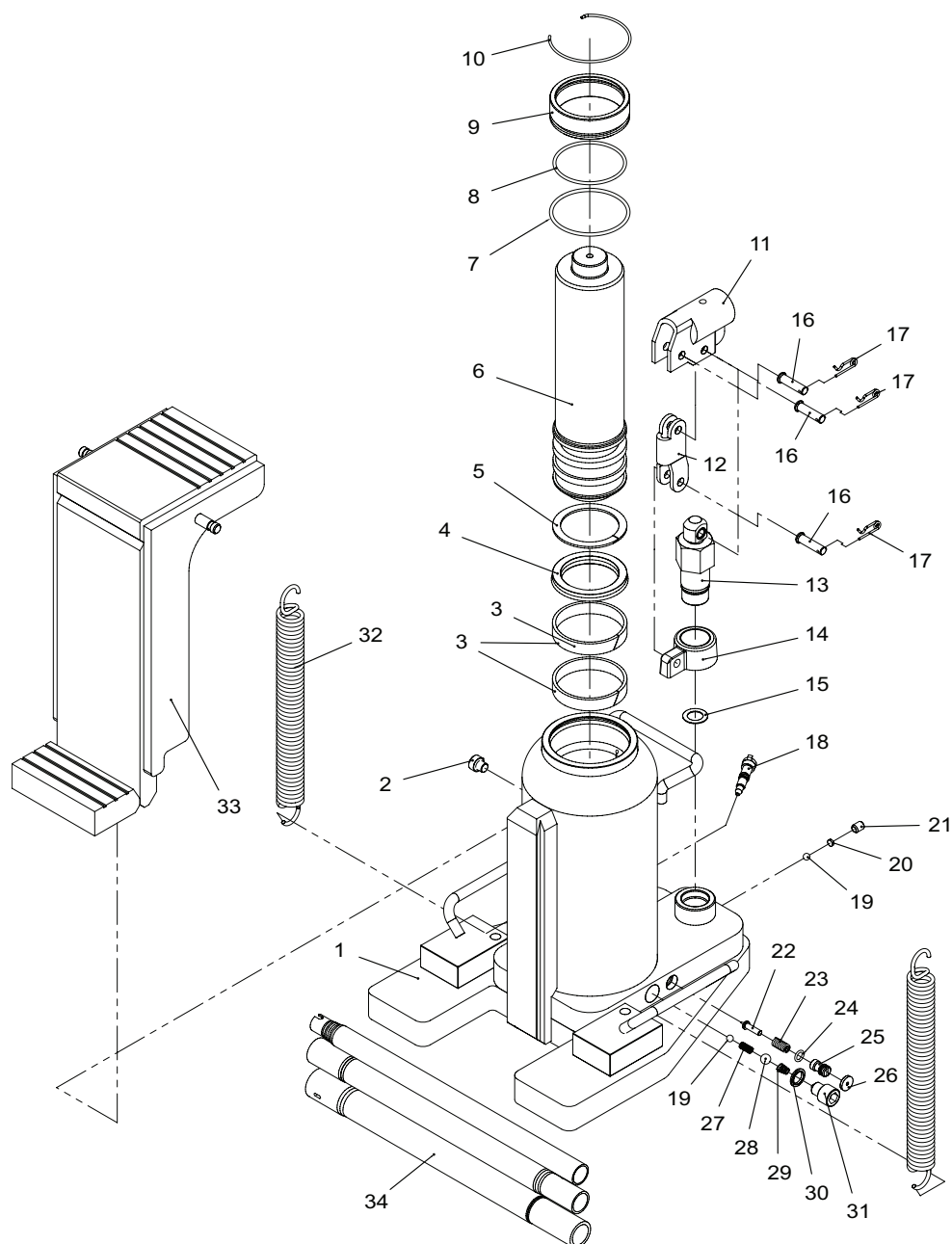


Toe Jack Service Parts

MODELS: J13300 - 15 Ton Capacity

SFA Companies 10939 N. Pomona Ave. Kansas City, MO 64153
 Tel: 888-332-6419 Fax: 816-891-6599
 E-mail: sales@bvahydraulics.com Website: www.bvahydraulics.com

Not all components of the jack are replacement items, but are illustrated as a convenient reference of location and position in the assembly sequence.



LIMITED LIFETIME WARRANTY

BVA Hydraulics®, represented in the United States by SFA Companies ["SFA"] warrants this product to be free from defects in material and workmanship for the life of the product as long as the original purchaser owns the product. The warranty is non-transferable and is subject to the terms, exclusions, and limitations described below:

- Damaged components, including but not limited to bent rams, dented or crushed cylinder walls, broken welds or couplers as well as worn out seals, o-rings and springs are the result of misuse and not covered by warranty and BVA Hydraulics will not provide any warranty credit for such damaged components.
- This warranty does not cover ordinary wear and tear, overloading, alterations (including repairs or attempted repairs not performed by BVA Hydraulics or one of its authorized personnel), improper fluid use, or use of the product in any manner for which the product was not intended or the use of which is not in accordance with the instructions or warnings provided with the product.
- In the unlikely event that a BVA Hydraulics product fails due to material defect in workmanship, you may contact SFA for disposition. In such cases, the customer's sole and exclusive remedy for any breach or alleged breach of warranty is limited to the repair or replacement of the defective product.
- Under no circumstances is BVA Hydraulics liable for any consequential or incidental damage or loss whatsoever.
- THIS WARRANTY IS LIMITED TO NEW PRODUCTS SOLD THROUGH AUTHORIZED DISTRIBUTORS AND OTHER CHANNELS DESIGNATED BY BVA HYDRAULICS. NO AGENT, EMPLOYEE OR OTHER REPRESENTATIVE OF BVA HYDRAULICS IS AUTHORIZED TO MODIFY THIS WARRANTY.
- THE FOREGOING IS EXCLUSIVE AND IS IN LIEU OF ALL OTHER EXPRESS AND IMPLIED WARRANTIES, INCLUDING BUT NOT LIMITED TO THE IMPLIED WARRANTIES OF MERCHANTABILITY AND FOR A FITNESS FOR A PARTICULAR PURPOSE.
- Components not manufactured by BVA Hydraulics including certain motor systems, gasoline engines, and others are not covered by this warranty and instead are covered by the manufacturer's separate manufacturer's warranty provided in the package.
- BVA Hydraulics' liability in all cases is limited to, and will not exceed the purchase price paid for the product.