



Lifting Bags

Aramid Reinforced



A lifting bag raising the axle of this train car for maintenance



Lifting bags are useful for many different types of applications



- High pressure air lifting bags require only 1" clearance and can lift up to 86 tons
- 3 or 4 layers of Aramid Fiber on both sides of the bag to create a lifting bag unequaled in strength and durability.
- Made in the USA and is ISO 9001/2008 and CE Certified
- Product replacement 3 year unconditional warranty.
- Marked with a distinct "bulls eye with tonnage rating"
- Conical, interlocking surface to limit slippage and aid in stacking.
- Each bag has either molded carry handles and/or tabs/eyelets

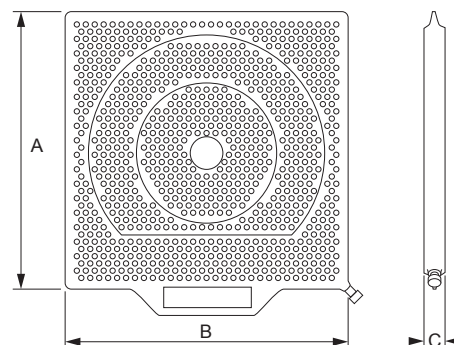


Made in the U.S.A.

All lifting bags are made in the USA and meet ISO 9001/2008 and CE certification.



LB-50



| Model Number | Capacity (tons) | Max. Lifting Height (in) | Max Working Pressure (psi) | Reinforcing Material | Handles or Eyelets | Dimensions (in) | | | Weight (lbs) |
|--------------|-----------------|--------------------------|----------------------------|----------------------|--------------------|-----------------|---------|---------------|--------------|
| | | | | | | Length A | Width B | Deflated Ht C | |
| LB-1 | 1.5 | 2.5 | 120 | Aramid | 2 Eyelets | 6.0 | 6.0 | 0.75 | 2.0 |
| LB-3 | 3.3 | 3.0 | 120 | Aramid | 4 Eyelets | 12.0 | 6.0 | 0.75 | 3.0 |
| LB-6 | 6 | 4.5 | 120 | Aramid | 4 Eyelets | 10.0 | 10.0 | 1.0 | 4.0 |
| LB-13 | 13 | 7.5 | 120 | Aramid | 4 Eyelets | 15.0 | 15.0 | 1.0 | 12.0 |
| LB-15 | 15 | 7.5 | 120 | Aramid | 2 Eyelets | 15.0 | 21.0 | 1.0 | 15.0 |
| LB-22 | 22 | 9.5 | 120 | Aramid | 1 Handle | 20.0 | 20.0 | 1.0 | 22.0 |
| LB-32 | 32 | 11.0 | 120 | Aramid | 1 Handle | 21.0 | 25.0 | 1.0 | 28.0 |
| LB-37 | 37 | 9.0 | 120 | Aramid | 2 Handles | 40.0 | 105.0 | 1.0 | 34.0 |
| LB-50 | 50 | 15.0 | 120 | Aramid | 2 Handles | 29.0 | 29.0 | 1.0 | 45.0 |
| LB-70 | 70 | 18.0 | 120 | Aramid | 2 Handles | 34.0 | 34.0 | 1.0 | 65.0 |
| LB-86 | 86 | 24.0 | 120 | Steel | 4 Handles | 42.0 | 42.0 | 1.0 | 118.0 |

1-888-332-6419

www.BVAhydraulics.com



Lifting Bag Accessories

Aramid Reinforced

| Reference Image | Model Number | Description |
|---|--------------|--|
|  | LB-ACVC | Air-Cock Shut-off Valve W/Safety Coupler |
|  | LB-AT80CF | 80 cu ft Air Tank, 3,000psi |
|  | LB-AR1 | Air Bottle Regulator w/safety coupler |
|  | LB-DDC | Dual Deadman Control w/safety coupler |
|  | LB-SDC | Single Deadman Control w/safety coupler |
|  | LB-RH10C | 10 ft Green Regulator Hose w/Safety Couplers |
|  | LB-H16YC | 20 ft Yellow High Pressure Hose w/safety coupler |
| | LB-H32YC | 32 ft Yellow High Pressure Hose w/safety coupler |
| | LB-H16BC | 20 ft Blue High Pressure Hose w/safety coupler |
| | LB-H32BC | 32 ft Blue High Pressure Hose w/safety coupler |
| | LB-H16RC | 20 ft Red High Pressure Hose w/safety coupler |
| | LB-H32RC | 32 ft Red High Pressure Hose w/safety coupler |
|  | LB-MCP4 | Master Control Pkg #4 |
|  | LB-MCP3 | Master Control Pkg #3 |