

MANIFOLDS & FLOW CONTROL VALVES

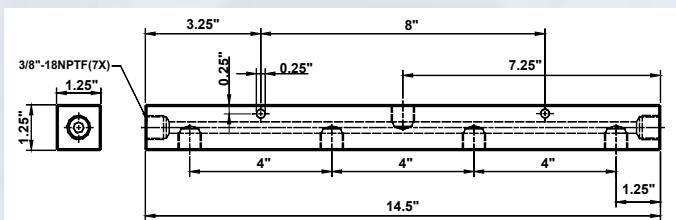
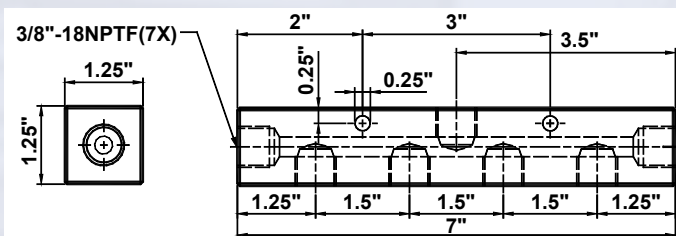
Manifolds



CM7



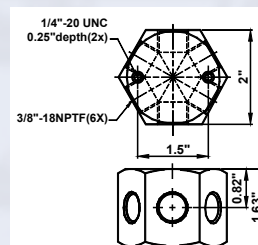
CM14



Manifold Type	Model Number	Number of Ports	Port Size	Mounting Hole
6-Port Hexagon Manifold	CMH6	6	3/8"-18NPTF	1/4"-20UNC
7" Long Manifold	CM7	7		
14" Long Manifold	CM14	7		



CMH6



Pump Mounted Manifold Block



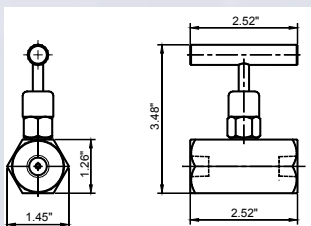
CMR2

- Converts BVA pumps with pump mounted valves for use with remote mounted valves
- Come with 4pcs. mounting screws

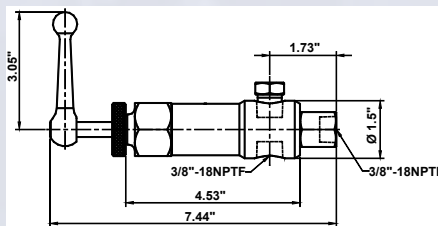
Flow Control Valves



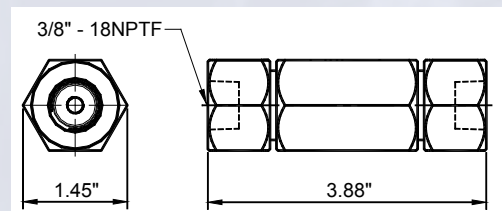
CVN1 & CVN3



CVR3



CVC3



Valve Type	Model Number	Ports	Application	Hydraulic Symbol
Needle Valve	CVN1	1/4"-18NPTF	Controls cylinder speed and acts as temporary shut-off valve for load holding	
	CVN3	3/8"-18NPTF		
Check Valve	CVC3	3/8"-18NPTF	Allows flow in one direction only	
Pressure Relief Valve	CVR3	3/8"-18NPTF	Controls pressure developed by the pump in hydraulic loop. By-pass occurred when pre-set pressure is reached. Turns clockwise to increase pressure, counter clockwise to decrease	