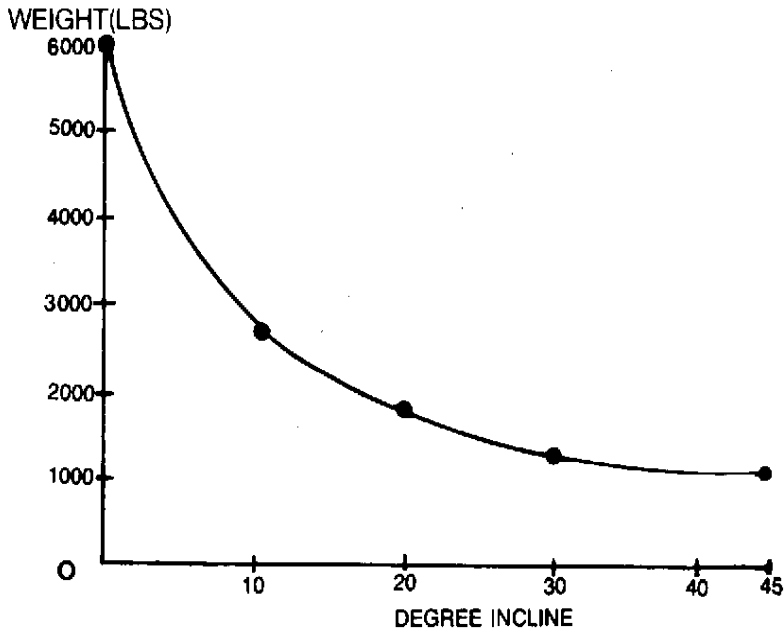


## MAXIMUM WEIGHT CAPACITIES-ROLLING LOAD (FIRST LAYER)



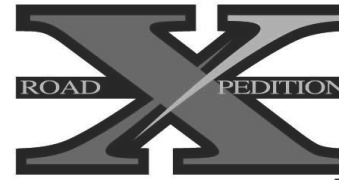
### 90 DAYS LIMITED WARRANTY

For a period of ninety (90) days from date of purchase, **Shinn Fu Co. of America, Inc.** will repair or replace, at its option, without charge, any of its products which fails due to a defect in material or workmanship, or which fails to conform to any implied warranty not excluded hereby.

Performance of any obligation under this warranty may be obtained by returning the warranted product, freight prepaid, to **Shinn Fu Co. of America, Inc.** Warranty Service Department, 10939 N. Pomona Ave., Kansas City, MO 64153.

Except where such limitations and exclusions are specifically prohibited by applicable law, (1) the CONSUMER'S SOLE AND EXCLUSIVE REMEDY SHALL BE THE REPAIR OR REPLACEMENT OF DEFECTIVE PRODUCTS AS DESCRIBED ABOVE, and (2) **Shinn Fu Co. of America, Inc.** SHALL NOT BE LIABLE FOR ANY CONSEQUENTIAL OR INCIDENTAL DAMAGE OR LOSS WHATSOEVER, and (3) THE DURATION OF ANY AND ALL EXPRESSED AND IMPLIED WARRANTIES, INCLUDING WITHOUT LIMITATION, ANY WARRANTIES OF MERCHANTABILITY AND FITNESS FOR A PARTICULAR PURPOSE, IS LIMITED TO A PERIOD OF NINETY (90) DAYS FROM DATE OF PURCHASE.

Some states do not allow limitations on how long an implied warranty lasts, so the above limitation may not apply to you. Some states do not allow the exclusion or limitation of incidental or consequential damages, so the above limitation or exclusion may not apply to you. This warranty gives you specific legal rights, and you may also have other rights which vary from state to state.



## Winch

### Operating Instructions & Parts Manual

Model Number

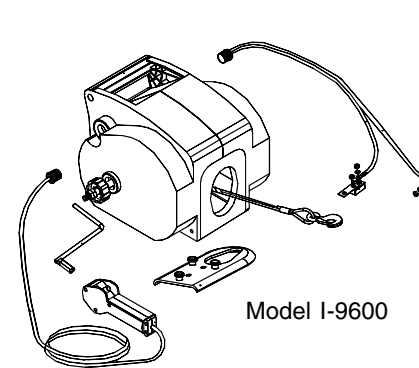
I-9600

P-1100

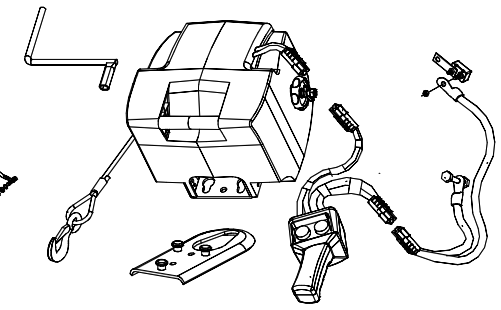
Rated Line Pull

1,200 lbs

2,600 lbs



Model I-9600



Model P-1100

### ⚠ ATENCIÓN

- Leer, comprender, y seguir las instrucciones antes de utilizar el aparato.
- El manual de instrucciones y la información de seguridad deben estar comunicado en lengua del operador antes del uso.
- No seguir estas indicaciones puede causar daños personales o materiales.

### ⚠ WARNING



To avoid crushing and related injuries:  
NEVER work on, under a suspended load.

Shinn Fu Company of America, Inc. © 2003  
10939 N. Pomona Ave.  
Kansas City, MO 64153  
Phone (816)891-6390, fax (816)891-6599

Printed in China  
OIPM#EW-03

**Save these instructions.** For your safety, read, understand, and follow the information provided with and on this winch. The owner and operator of this equipment shall have an understanding of this winch and safe operating procedures before attempting to use. The owner and operator shall be aware that use and repair of this product may require special skills and knowledge. Instructions and safety information shall be conveyed in the operator's native language before use of this product is authorized. If any doubt exists as to the safe and proper use of this winch, remove from service immediately. **Inspect before each use.** Do not use if broken, bent, cracked or damaged parts are noted. Any winch that appears damaged in any way, or operates abnormally shall be removed from service immediately. If the winch has been or suspected to have been subjected to a shock load (a dynamic load that increases the cable tension suddenly, unexpectedly), immediately discontinue use until the winch has been checked by qualified personnel. Labels and Owner's Manuals are available from manufacturer (see Replacement Parts, pages 6, 7).

## PRODUCT DESCRIPTION

Road Xpedition Winches are designed and engineered for intermittent use in moving and positioning loads along a horizontal plane. They are particularly useful in trailering rolling or buoyant loads (loading vehicles or boats onto a trailer). They can also be used as an aid in positioning loads around the farm or home which are too great to position by hand. Although not designed as self-recovery winches, they can be used as an aid to self-recovery in situations where the undamaged conveyance has simply lost traction in snow or wet landscape conditions. These winches are not designed to move or position conveyances which are damaged or that can not be rolled easily. For instance, a vehicle with a broken tie rod, locked axle or brake, etc. would quickly overpower the winch and such use should not be attempted. As well a 4800 lb boat can easily be winched onto a completely submerged trailer, but should never be attempted if any portion of the loading platform is out of the water. These versatile tools should never be used to secure or hold a load.

## SPECIFICATIONS

Model	*Rated Line Pull (lbs.)	**Rated Rolling Load (lbs.)	Wire Cable Size / Drum Capacity	Duty Cycle (feet of cable powered / minutes of non-use)
I-9600	1,200	6,000	3/16" X 30 ft.	20 ft. / 20 minutes
P-1100	2,600	30,000	1/4" X 42 ft.	30 ft. / 30 minutes

\* Rated Capacity is not possible when cable spool has more than 1 layer of cable on it. Rated capacity is based on fully extended cable with at least 4 turns of cable on drum. Capacity is decreased by 50% with each layer spooled onto drum.

\*\* Based on a smooth, level, relatively frictionless rolling surface.

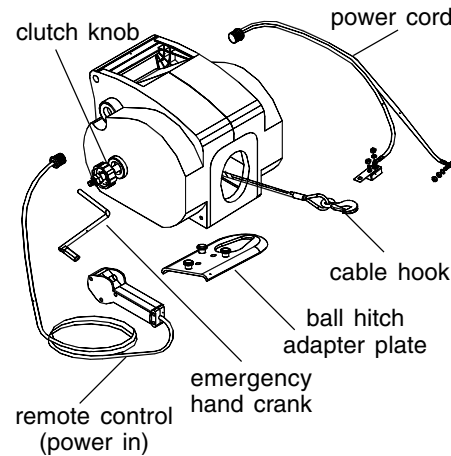


Fig. 1 - I-9600 Nomenclature

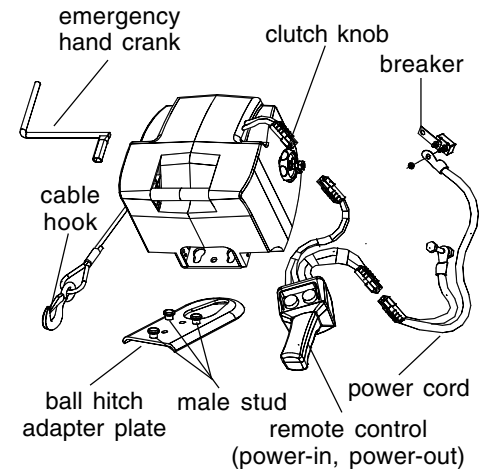


Fig. 2 - P-1100 Nomenclature

## BEFORE USE

1. Hang the ball hitch adapter plate onto your hitch ball, with male studs pointing upward. Align the three male studs of adapter plate with corresponding holes in your winch base, slide forward to lock winch into place.
2. Inspect before each use. Ensure the host battery (normally an auxiliary battery) is fully charged.
3. Position your fully charged auxiliary battery in a location compatible with the length of the power cord provided with your winch.
4. The winch breaker should come pre-connected (but untightened) to the positive (red) wire of your power cord. Ensure connection is tight before use.
5. Connect copper buss that is attached to the breaker directly to the positive (+) post or common battery cable end thru-bolt already attached to your auxiliary battery. Don't alter the power cord connection to fit your battery, instead ensure your auxiliary battery positive (+) post or cable head connection is com-

patible to the wire connector. **NOTE:** Ensure that the breaker, it's connections, and buss bar have adequate clearance from any grounded (-) component of your vehicle and battery.

6. Attach the black wire to the ground (-) terminal of your auxiliary battery or to a common cable end thru-bolt. If your auxiliary battery is used to provide power to existing vehicle loads, simply connect the ground (-) side of your power cord to an already grounded component ( vehicle frame, bumper).
7. Plug the remote control cord into the winch housing. On **Model I-9600**, the remote receptacle is recessed and found on the same side of housing as the clutch knob, on **Model P-1100** the power cord receptacle is at the end of a short pre-wired quick connector on the winch.
8. On **Model I-9600**, plug the power cord into the receptacle found on the housing opposite the remote.

## WARNING

Read, understand and follow all printed materials provided with and on this device. Never exceed rated capacity. This winch is a pulling device only. Never use winch as a lifting or support device. Wear protective gloves when handling cable. Secure a heavy blanket or jacket on cable 3 ft behind cable when winching to lessen the severity of a cable break. When not in use, disconnect winch system at battery. Do not alter or modify this device. Use only those parts, accessories and adapters provided by the manufacturer. Always connect the provided breaker to power cord. Never use this product to lift, support, move or position persons, animals, flammable and/or hazardous materials. Never use emergency hand crank to assist a powered winch or to spool cable out. Failure to heed these markings may result in personal injury and/or property damage.

## OPERATION

**Model I-9600** This model is capable of power-in cable function only. You can cycle between power-in and free-wheel cable function using the clutch knob.

1. To extend the winch cable to the load being pulled, simply turn the clutch knob counterclockwise, by hand, until the cable can just be pulled off the cable spool with some effort.

**Note:** Always leave at least 3 full turns of cable on the cable spool to help prevent damage to the winch.

2. Attach the safety hook to the load.

**Note:** Never wrap the cable around a load, then hook the cable to itself! Always connect the winch's safety hook to a snatch block or load strap hook whose rated capacity is greater than the rated capacity of your winch!

3. Turn the clutch knob clockwise, by hand, until tight.

4. Apply firm, steady pressure to the remote control button to take up any slack, then release pressure on the button and check your setup. If satisfactory, engage the remote control button until load is in desired position.
5. When load is in desired position, secure the load with appropriate means. Turn the clutch knob counterclockwise to release tension on the cable. Pull cable out enough to remove safety hook.
6. When respooling cable (clutch knob turned clockwise, and firm, steady pressure on remote control button) use suitable gloves or heavy rag material to help protect your hands while keeping steady tension on the cable. Spool cable until approximately 4 inches of cable (plus safety hook) is showing.

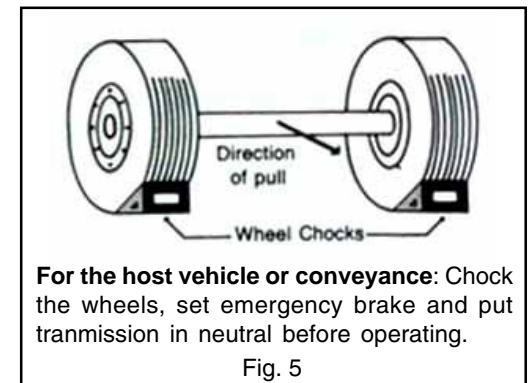
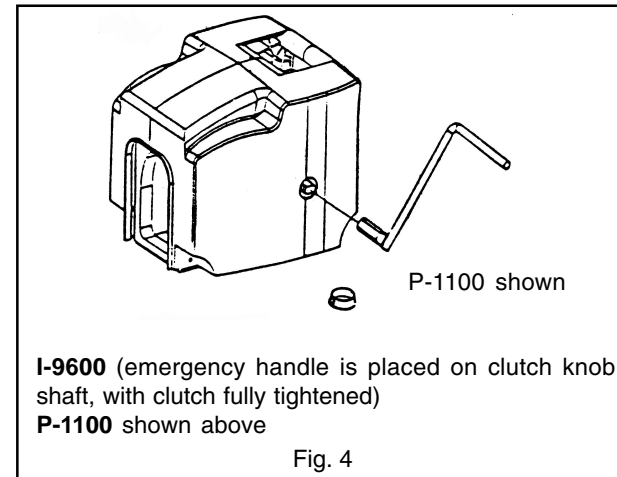
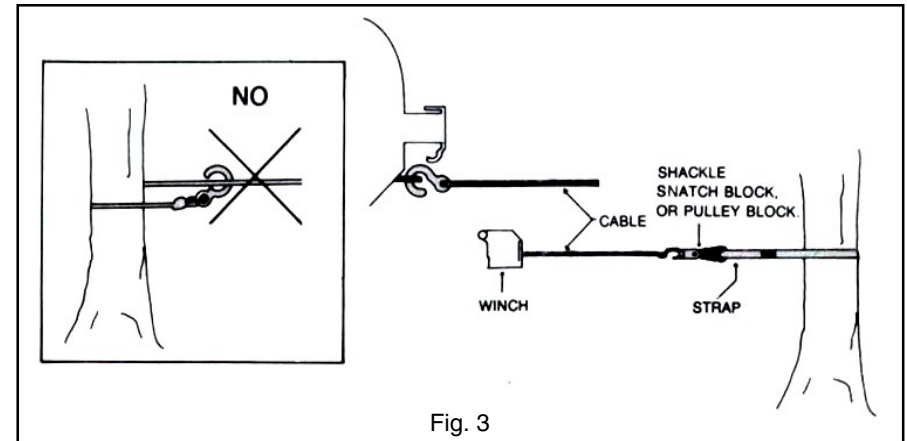
**Model P-1100** This model is capable of power-in / power-out cable function. It also has a free-wheel cable function by means of the clutch knob. The remote control has a green 'cable in' button and a red 'cable out' button. To use, follow the directions for model I-9600 except

1. For power-in / power-out cable function, tighten clutch knob clockwise, press appropriate buttons but never simultaneously.
2. Never exceed the duty cycle in either powered direction.

## EMERGENCY HAND CRANK

**Note:** Never use the emergency hand crank to assist an operating winch motor. Never use to spool cable out. This can result in injury and/or property damage. It is designed for use only as a means of spooling cable in when adequate 12 volt DC power is not available.

1. Disconnect power cord at battery. Secure load by appropriate means.
2. Align female portion of handle to the output shaft on winch (see Fig. 4, page 5).
3. Use handle to spool cable in.
4. When done, remove emergency handle.



## REPLACEMENT PARTS

Not all components of the winch are replacement items, but are illustrated as a convenient reference of location and position in the assembly sequence. When ordering parts, give model number, serial number and description below. Call or write for current pricing: phone (816) 891-6390, fax (816) 891-6599 or contact Customer Support 10939 N. Pomona Ave., Kansas City, MO 64153.

### Model I-9600

Part No.	Description	Quantity
01	motor assembly	1
02	solenoid	1
03	power cord	1
04	circuit breaker assembly	1
05	cable assembly	1
06	adapter plate	1
07	emergency hand crank	1
08	clutch knob	1
09	remote control	1
10	left housing	1
11	right housing	1

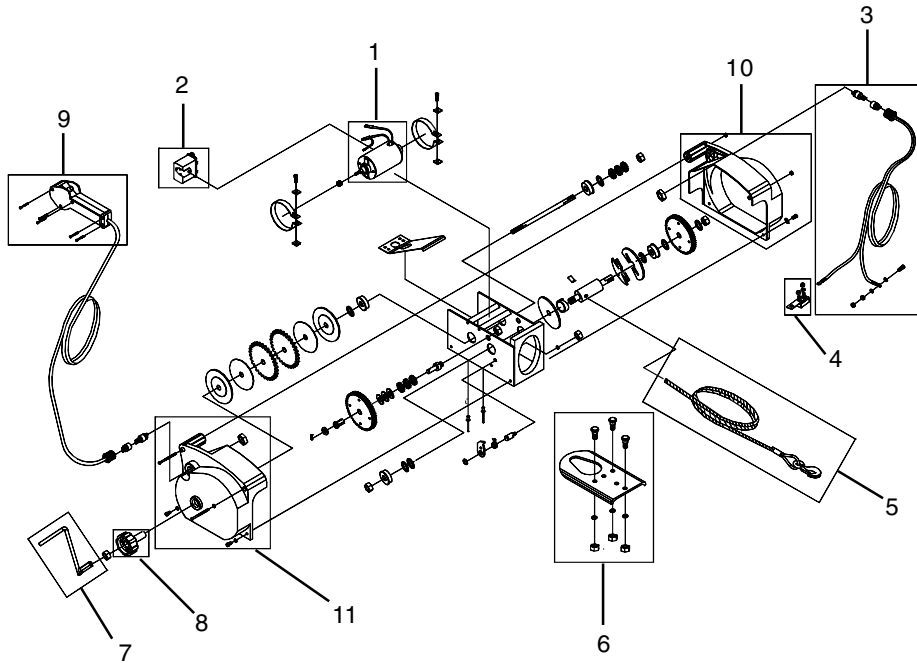


Figure 6 - Replacement Parts Illustration for Model I-9600

### Model P-1100

Part No.	Description	Quantity
01	motor assembly	1
02	circuit breaker assembly	1
03	power cord	1
04	remote control switch	1
05	housing assembly	1
06	clutch knob	1
07	emergency hand crank	1
08	adapter plate	1
09	cable assembly	1

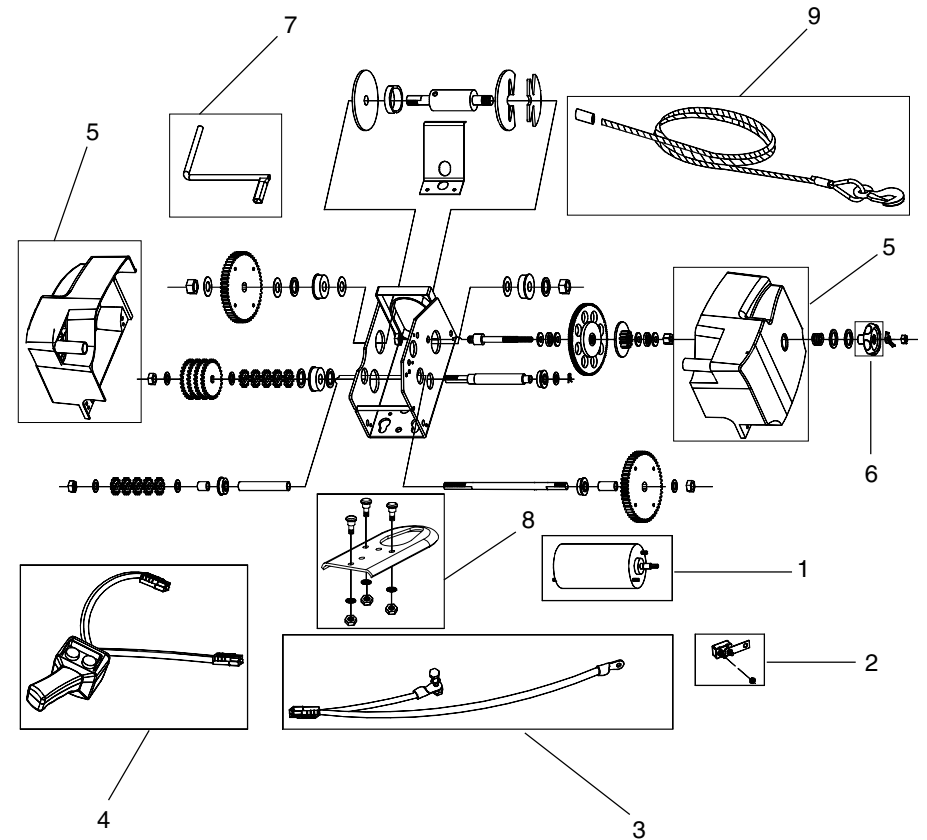


Figure 7 - Replacement Parts Illustration for Model P-1100